

# HTRA1 Polyclonal Antibody

Catalog Number: E-AB-53300



**Note:** Centrifuge before opening to ensure complete recovery of vial contents.

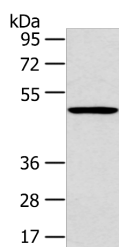
## Description

<b>Reactivity</b>	Human, Mouse, Rat
<b>Immunogen</b>	Synthetic peptide of human HTRA1
<b>Host</b>	Rabbit
<b>Isotype</b>	IgG
<b>Purification</b>	Antigen affinity purification
<b>Conjugation</b>	Unconjugated
<b>Formulation</b>	PBS with 0.05% NaN <sub>3</sub> and 40% Glycerol, pH7.4

## Applications Recommended Dilution

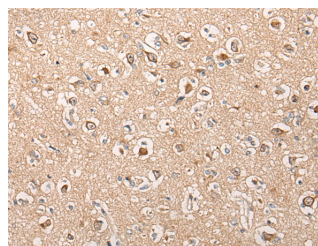
<b>WB</b>	1:500-1:2000
<b>IHC</b>	1:40-1:200
<b>ELISA</b>	1:5000-1:10000

## Data

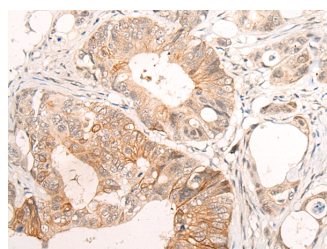


Western blot analysis of 231 cell using HTRA1 Polyclonal Antibody at dilution of 1:500

**Observed Mw: Refer to figures**  
**Calculated Mw: 51 kDa**



Immunohistochemistry of paraffin-embedded Human brain tissue using HTRA1 Polyclonal Antibody at dilution of 1:55 (x200)



Immunohistochemistry of paraffin-embedded Human colorectal cancer tissue using HTRA1 Polyclonal Antibody at dilution of 1:55 (x200)

## Preparation & Storage

**Storage** Store at -20°C. Avoid freeze / thaw cycles.

## Background

This gene encodes a member of the trypsin family of serine proteases. This protein is a secreted enzyme that is proposed

## For Research Use Only

A Reliable Research Partner in Life Science and Medicine

Toll-free: 1-888-852-8623

Web: [www.elabscience.com](http://www.elabscience.com)

Tel: 1-832-243-6086

Email: [techsupport@elabscience.com](mailto:techsupport@elabscience.com)

Fax: 1-832-243-6017

# HTRA1 Polyclonal Antibody

Catalog Number: E-AB-53300



to regulate the availability of insulin-like growth factors (IGFs) by cleaving IGF-binding proteins. It has also been suggested to be a regulator of cell growth. Variations in the promoter region of this gene are the cause of susceptibility to age-related macular degeneration type 7.

---

## For Research Use Only

A Reliable Research Partner in Life Science and Medicine

Toll-free: 1-888-852-8623

Tel: 1-832-243-6086

Fax: 1-832-243-6017

Web: [www.elabscience.com](http://www.elabscience.com)

Email: [techsupport@elabscience.com](mailto:techsupport@elabscience.com)