

Elab Fluor® Red 780 Anti-Mouse Ly-6G/Ly-6C (Gr-1) Antibody[RB6-8C5]

Catalog Number: E-AB-F1120S

Note: Centrifuge before opening to ensure complete recovery of vial contents.

Description

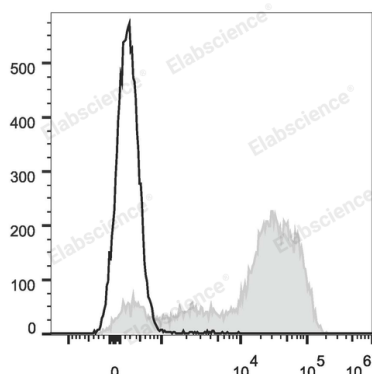
Reactivity	Mouse
Host	Rat
Isotype	Rat IgG2b, κ
Clone No.	RB6-8C5
Isotype Control	Elab Fluor® Red 780 Rat IgG2b, κ Isotype Control[LTF-2] [Product E-AB-F09842S]
Conjugation	Elab Fluor® Red 780
Conjugation Information	Elab Fluor® Red 780 is designed to be excited by the Red (627-640 nm) laser and detected using an optical filter centered near 770 nm (e.g., a 780/60 nm bandpass filter).
Storage Buffer	Phosphate buffered solution, pH 7.2, containing 0.09% stabilizer.

Applications

Recommended usage

FCM	Each lot of this antibody is quality control tested by flow cytometric analysis. The amount of the reagent is suggested to be used 5 μL of antibody per test (million cells in 100 μL staining volume or per 100 μL of whole blood). Please check your vial before the experiment. Since applications vary, the appropriate dilutions must be determined for individual use.
------------	---

Data



C57BL/6 murine bone marrow cells are stained with Elab Fluor® Red 780 Anti-Mouse Ly-6G/Ly-6C (Gr-1) Antibody (filled gray histogram). Unstained bone marrow cells (empty black histogram) are used as control.

Preparation & Storage

Storage	Keep as concentrated solution. This product can be stored at 2-8°C for 24 months. Please protected from prolonged exposure to light and do not freeze.
Shipping	Ice bag

Antigen Information

Alternate Names	Gr-1;Gr1;Ly-6G/Ly-6C;Ly6G/Ly6C
Uniprot ID	P35461;POCW03
Gene ID	546644;17067

For Research Use Only

Background

Gr-1 is a 21-25 kD protein also known as Ly-6G/Ly-6C. This myeloid differentiation antigen is a glycosylphosphatidylinositol (GPI)-linked protein expressed on granulocytes and macrophages. In bone marrow, the expression levels of Gr-1 directly correlate with granulocyte differentiation and maturation; Gr-1 is also transiently expressed on bone marrow cells in the monocyte lineage. Immature Myeloid Gr-1+ cells play a role in the development of antitumor immunity.