

## c-MET Monoclonal Antibody

catalog number: **AN200184P**

**Note:** Centrifuge before opening to ensure complete recovery of vial contents.

### Description

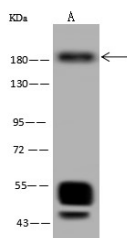
<b>Reactivity</b>	Human
<b>Immunogen</b>	Recombinant Human c-MET Protein
<b>Host</b>	Mouse
<b>Isotype</b>	IgG1
<b>Clone</b>	6A7
<b>Purification</b>	Protein A
<b>Buffer</b>	0.2 µm filtered solution in PBS

### Applications

### Recommended Dilution

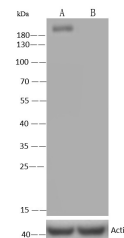
<b>WB</b>	1:500-1:2000
-----------	--------------

### Data



Western Blot with HGFR Monoclonal Antibody at dilution of 1:500. Lane A: Hela Whole Cell Lysate, Lysates/proteins at 30 µg per lane.

**Observed-MW:200 kDa**  
**Calculated-MW:156 kDa**



Western Blot with c-MET Monoclonal Antibody at dilution of 1:500. Lane A: Hela Whole Cell Lysate, Lane B: c-MET konckout Hela Whole Cell Lysate, Lysates/proteins at 30 µg per lane.

**Observed-MW:200 kDa**  
**Calculated-MW:156 kDa**

### Preparation & Storage

**Storage** This antibody can be stored at 2°C-8°C for one month without detectable loss of activity. Antibody products are stable for twelve months from date of receipt when stored at -20°C to -80°C. Preservative-Free. Avoid repeated freeze-thaw cycles.

**Shipping** Ice bag

### Background

This gene encodes a member of the receptor tyrosine kinase family of proteins and the product of the proto-oncogene MET. The encoded preproprotein is proteolytically processed to generate alpha and beta subunits that are linked via disulfide bonds to form the mature receptor. Further processing of the beta subunit results in the formation of the M10 peptide, which has been shown to reduce lung fibrosis. Binding of its ligand, hepatocyte growth factor, induces dimerization and activation of the receptor, which plays a role in cellular survival, embryogenesis, and cellular migration and invasion. Mutations in this gene are associated with papillary renal cell carcinoma, hepatocellular carcinoma, and various head and neck cancers. Amplification and overexpression of this gene are also associated with multiple human cancers.

### For Research Use Only

Toll-free: 1-888-852-8623  
Web: [www.elabscience.com](http://www.elabscience.com)

Tel: 1-832-243-6086  
Email: [techsupport@elabscience.com](mailto:techsupport@elabscience.com)

Fax: 1-832-243-6017

Rev. V1.0