

Recombinant Human Kallikrein 1/KLK1 Protein (His Tag)



Catalog Number:PKSH031628

Note: Centrifuge before opening to ensure complete recovery of vial contents.

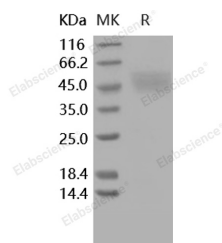
Description

Synonyms	Kallikrein-1;Kidney/Pancreas/Salivary Gland Kallikrein;Tissue Kallikrein;KLK1
Species	Human
Expression Host	HEK293 Cells
Sequence	Met 1-Ser 262
Accession	NP_002248.1
Calculated Molecular Weight	28.0 kDa
Observed molecular weight	50 kDa
Tag	C-His
Bioactivity	Measured by its ability to cleave a flourogenic peptide substrate Pro-Phe-Arg-7-amido-4-methylcoumarin (PFR-AMC). The specific activity is > 1, 500 pmoles/min/μg. (Activation description: The proenzyme needs to be activated by Thermolysin for an activated form)

Properties

Purity	> 95 % as determined by reducing SDS-PAGE.
Endotoxin	< 1.0 EU per μg of the protein as determined by the LAL method.
Storage	Generally, lyophilized proteins are stable for up to 12 months when stored at -20 to -80°C. Reconstituted protein solution can be stored at 4-8°C for 2-7 days. Aliquots of reconstituted samples are stable at < -20°C for 3 months.
Shipping	This product is provided as lyophilized powder which is shipped with ice packs.
Formulation	Lyophilized from sterile PBS, pH 7.4 Normally 5 % - 8 % trehalose, mannitol and 0.01 % Tween80 are added as protectants before lyophilization. Please refer to the specific buffer information in the printed manual.
Reconstitution	Please refer to the printed manual for detailed information.

Data



> 95 % as determined by reducing SDS-PAGE.

Background

Human tissue kallikrein (KLK1) is a serine protease, component of the KKS that has been demonstrated to exert pleiotropic beneficial effects in protection from tissue injury through its antiinflammatory, antiapoptotic, antifibrotic and antioxidative actions. Polymorphism of the human tissue kallikrein 1 (KLK1) A1789G gene is associated with susceptibility to hypertension.

For Research Use Only

A Reliable Research Partner in Life Science and Medicine

Toll-free: 1-888-852-8623

Web: www.elabscience.com

Tel: 1-832-243-6086

Email: techsupport@elabscience.com

Fax: 1-832-243-6017