

# Recombinant Human JAM-A/F11R Protein (Fc Tag)

Catalog Number:PKSH031772



**Note:** Centrifuge before opening to ensure complete recovery of vial contents.

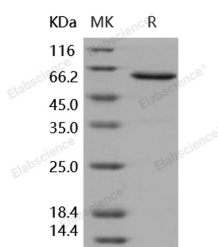
## Description

<b>Synonyms</b>	Junctional Adhesion Molecule A;JAM-A;Junctional Adhesion Molecule 1;JAM-1;Platelet F11 Receptor;Platelet Adhesion Molecule 1;PAM-1;CD321;F11R;JAM1;JCAM;JAMA;JCAM;KAT
<b>Species</b>	Human
<b>Expression Host</b>	HEK293 Cells
<b>Sequence</b>	Met 1-Ala 242
<b>Accession</b>	NP_058642.1
<b>Calculated Molecular Weight</b>	50.0 kDa
<b>Observed molecular weight</b>	61 kDa
<b>Tag</b>	C-hFc
<b>Bioactivity</b>	Measured by the ability of the immobilized protein to support the adhesion of Jurkat human acute T cell leukemia cells. When $8 \times 10^4$ cells/well are added to JAM-A-Fc coated plates (2.5 $\mu$ g/mL, 100 $\mu$ L/well) in the presence of 20 ng/mL PMA, approximately 30-40% will adhere after 30 minutes at 37°C.

## Properties

<b>Purity</b>	> 95 % as determined by reducing SDS-PAGE.
<b>Endotoxin</b>	< 1.0 EU per $\mu$ g of the protein as determined by the LAL method.
<b>Storage</b>	Generally, lyophilized proteins are stable for up to 12 months when stored at -20 to -80°C. Reconstituted protein solution can be stored at 4-8°C for 2-7 days. Aliquots of reconstituted samples are stable at < -20°C for 3 months.
<b>Shipping</b>	This product is provided as lyophilized powder which is shipped with ice packs.
<b>Formulation</b>	Lyophilized from sterile 100mM Glycine, 10mM NaCl, 50mM Tris, pH 7.5 Normally 5 % - 8 % trehalose, mannitol and 0.01% Tween80 are added as protectants before lyophilization. Please refer to the specific buffer information in the printed manual.
<b>Reconstitution</b>	Please refer to the printed manual for detailed information.

## Data



> 95 % as determined by reducing SDS-PAGE.

## Background

Junctional adhesion molecule-A (JAM-A); also known as F11 receptor (F11R) or Cluster of Differentiation 321 (CD321); is a transmembrane protein expressed at tight junctions of epithelial and endothelial cells; as well as on circulating

## For Research Use Only

A Reliable Research Partner in Life Science and Medicine

Toll-free: 1-888-852-8623

Web: [www.elabscience.com](http://www.elabscience.com)

Tel: 1-832-243-6086

Email: [techsupport@elabscience.com](mailto:techsupport@elabscience.com)

Fax: 1-832-243-6017

# Recombinant Human JAM-A/F11R Protein (Fc Tag)

Catalog Number:PKSH031772



leukocytes. JAM-A protein serves as a serotype-independent receptor for mammalian orthoreoviruses (reoviruses). It is also a ligand for the integrin LFA1; involves in leukocyte transmigration. As a cell adhesion molecule of the immunoglobulin superfamily; JAM-A protein involves in platelet adhesion; secretion and aggregation; and plays a crucial role in inflammatory thrombosis and atherosclerosis. In addition; it may be a potential therapeutic target for breast cancer.

---

## For Research Use Only

A Reliable Research Partner in Life Science and Medicine

Toll-free: 1-888-852-8623

Tel: 1-832-243-6086

Fax: 1-832-243-6017

Web: [www.elabscience.com](http://www.elabscience.com)

Email: [techsupport@elabscience.com](mailto:techsupport@elabscience.com)