

PE/Cyanine7 Anti-Human CD20 Antibody[2H7]

Catalog Number: E-AB-F1212H

Note: Centrifuge before opening to ensure complete recovery of vial contents.

Description

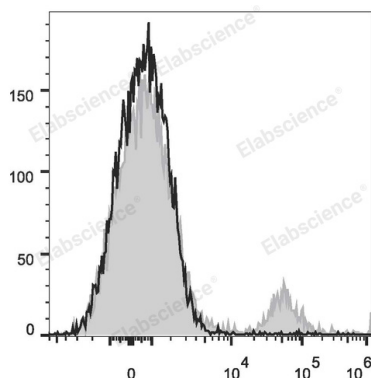
Reactivity	Human;Rhesus;Cynomolgus
Host	Mouse
Isotype	Mouse IgG2b, κ
Clone No.	2H7
Isotype Control	PE/Cyanine7 Mouse IgG2b, κ Isotype Control[MPC-11] [Product E-AB-F09812H]
Conjugation	PE/Cyanine 7
Conjugation Information	PE/Cyanine7 is designed to be excited by the Blue (488 nm), Green (532 nm) and yellow-green (561 nm) lasers and detected using an optical filter centered near 775 nm (e.g., a 780/60 nm bandpass filter).
Storage Buffer	Phosphate buffered solution, pH 7.2, containing 0.09% stabilizer and 1% protein protectant.

Applications

Recommended usage

FCM	Each lot of this antibody is quality control tested by flow cytometric analysis. The amount of the reagent is suggested to be used 5 μL of antibody per test (million cells in 100 μL staining volume or per 100 μL of whole blood). Please check your vial before the experiment. Since applications vary, the appropriate dilutions must be determined for individual use.
------------	---

Data



Human peripheral blood lymphocytes are stained with PE/Cyanine7 Anti-Human CD20 Antibody (filled gray histogram) or Mouse IgG2b Isotype Control PE/Cyanine7 (empty black histogram).

Preparation & Storage

Storage	Keep as concentrated solution. This product can be stored at 2-8°C for 12 months. Please protected from prolonged exposure to light and do not freeze.
Shipping	Ice bag

Antigen Information

Alternate Names	B-lymphocyte surface antigen B1;Bp35;Leukocyte surface antigen Leu-16;MS4A1
Uniprot ID	P11836

For Research Use Only

Gene ID

931

Background

CD20 is a 33-37 kD, four transmembrane spanning protein, also known as B1 and Bp35. CD20 is expressed on pre-B-cells, resting and activated B cells (not plasma cells), some follicular dendritic cells, and at low levels on a T cell subset. CD20 is heavily phosphorylated on activated B cells and malignant B cells. Homo-oligomeric complexes of CD20 are thought to form Ca^{2+} conductive ion channels in the plasma membrane of B cells. The CD20 molecule is involved in B-cell activation and is associated with various Src family kinases (Lyn, Lck, Fyn). It exists in a complex with MHC class I and II, CD53, CD81, and CD82.