

Recombinant Human CLEC10A/CD301 Protein (His Tag)



Catalog Number: PKSH032256

Note: Centrifuge before opening to ensure complete recovery of vial contents.

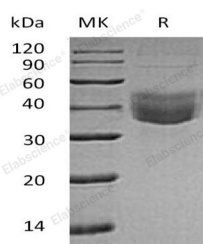
Description

Synonyms	C-Type Lectin Domain Family 10 Member A; C-Type Lectin Superfamily Member 14; Macrophage Lectin 2; CD301; CLEC10A; CLECSF13; CLECSF14; HML
Species	Human
Expression Host	HEK293 Cells
Sequence	Gln61-His316
Accession	Q8IUN9
Calculated Molecular Weight	29.8 kDa
Observed molecular weight	40 kDa
Tag	C-His

Properties

Purity	> 95 % as determined by reducing SDS-PAGE.
Endotoxin	< 1.0 EU per µg of the protein as determined by the LAL method.
Storage	Generally, lyophilized proteins are stable for up to 12 months when stored at -20 to -80°C. Reconstituted protein solution can be stored at 4-8°C for 2-7 days. Aliquots of reconstituted samples are stable at < -20°C for 3 months.
Shipping	This product is provided as lyophilized powder which is shipped with ice packs.
Formulation	Lyophilized from a 0.2 µm filtered solution of 20mM PB, 150mM NaCl, pH 7.4. Normally 5 % - 8 % trehalose, mannitol and 0.01 % Tween80 are added as protectants before lyophilization. Please refer to the specific buffer information in the printed manual
Reconstitution	Please refer to the printed manual for detailed information.

Data



> 95 % as determined by reducing SDS-PAGE.

Background

C-Type Lectin Domain Family 10 Member A (CLEC10A) is a type II transmembrane C-type lectin that is expressed on immature myeloid dendritic cells and alternatively activated (tolerogenic) macrophages. CLEC10A/MGL binds and internalizes molecules with terminal nonsialylated GalNAc carbohydrates such as the Tn carcinoma antigen. CLEC10A/MGL also binds the GP envelope glycoprotein on Marburg and Ebola viruses and enhances viral entry and infectivity. It constitute a unique class of C-type lectins because of their specificity for galactose and its structural homologues. CLEC10A is thought to participate in the recognition of molecules from both altered self and pathogens due to its monosaccharide specificity for Gal and N-acetylgalactosamine (GalNAc). Human and rat carry a single gene for

For Research Use Only

A Reliable Research Partner in Life Science and Medicine

Toll-free: 1-888-852-8623

Web: www.elabscience.com

Tel: 1-832-243-6086

Email: techsupport@elabscience.com

Fax: 1-832-243-6017

Recombinant Human CLEC10A/CD301 Protein (His Tag)



Catalog Number: PKSH032256

CLEC10A/MGL, while mouse has two closely related MGL1 and MGL2 genes.

For Research Use Only

A Reliable Research Partner in Life Science and Medicine

Toll-free: 1-888-852-8623

Tel: 1-832-243-6086

Fax: 1-832-243-6017

Web: www.elabscience.com

Email: techsupport@elabscience.com