

Phospho-CHEK2 (Thr68) Polyclonal Antibody

Catalog Number:E-AB-20843



Note: Centrifuge before opening to ensure complete recovery of vial contents.

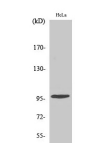
Description

Reactivity	Human,Mouse,Rat
Immunogen	Synthesized peptide derived from human Chk2 around the phosphorylation site of Thr68
Host	Rabbit
Isotype	IgG
Purification	Affinity purification
Conjugation	Unconjugated
Formulation	PBS with 0.02% sodium azide, 0.5% protective protein and 50% glycerol, pH7.4

Applications Recommended Dilution

WB	1:500-1:2000
IHC	1:100-1:300
IF	1:50-1:200
ELISA	1:10000-1:20000

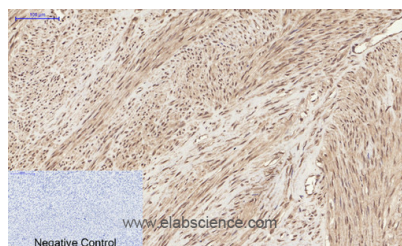
Data



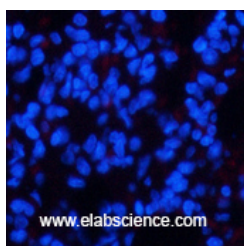
www.elabscience.com

Western Blot analysis of HeLa cells using Phospho-CHEK2 (Thr68) Polyclonal Antibody at dilution of 1:500

Observed Mw:61kDa
Calculated Mw:61kDa



Immunohistochemistry of paraffin-embedded Human uterus tissue using Phospho-CHEK2 (Thr68) Polyclonal Antibody at dilution of 1:200



www.elabscience.com

Immunofluorescence analysis of Rat lung tissue using Phospho-CHEK2 (Thr68) Polyclonal Antibody at dilution of 1:200

Preparation & Storage

Storage Store at -20°C. Avoid freeze / thaw cycles.

For Research Use Only

A Reliable Research Partner in Life Science and Medicine

Toll-free: 1-888-852-8623

Tel: 1-832-243-6086

Fax: 1-832-243-6017

Web: www.elabscience.com

Email: techsupport@elabscience.com

Phospho-CHEK2 (Thr68) Polyclonal Antibody

Catalog Number: E-AB-20843



Background

Regulates cell cycle checkpoints and apoptosis in response to DNA damage, particularly to DNA double-strand breaks. Inhibits CDC25C phosphatase by phosphorylation on 'Ser-216', preventing the entry into mitosis. May also play a role in meiosis. Regulates the TP53 tumor suppressor through phosphorylation at 'Thr-18' and 'Ser-20'.

For Research Use Only

A Reliable Research Partner in Life Science and Medicine

Toll-free: 1-888-852-8623

Web: www.elabscience.com

Tel: 1-832-243-6086

Email: techsupport@elabscience.com

Fax: 1-832-243-6017