

Note: Centrifuge before opening to ensure complete recovery of vial contents.

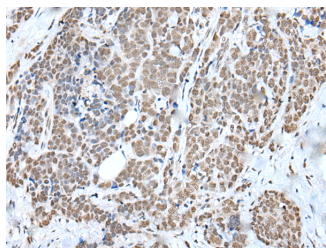
Description

Reactivity	Human, Mouse
Immunogen	Full length fusion protein
Host	Rabbit
Isotype	IgG
Purification	Antigen affinity purification
Conjugation	Unconjugated
Formulation	PBS with 0.05% NaN ₃ and 40% Glycerol, pH7.4

Applications Recommended Dilution

IHC	1:30-1:150
ELISA	1:5000-1:10000

Data



Immunohistochemistry of paraffin-embedded Human thyroid cancer tissue using WTAP Polyclonal Antibody at dilution of 1:35(×200)

Preparation & Storage

Storage Store at -20°C. Avoid freeze / thaw cycles.

Background

WTAP, also named as KIAA0105 and hFL(2)D, is previously identified as a protein associated with Wilms' tumor-1 (WT-1) protein that is essential for the development of the genitourinary system. It is a Pre-mRNA-splicing regulator protein. It is a regulatory subunit of the WMM N6-methyltransferase complex which plays a role in the efficiency of mRNA splicing and processing and mRNA stability. It is required for accumulation of METTL3 and METTL14 to nuclear speckle.

For Research Use Only

A Reliable Research Partner in Life Science and Medicine

Toll-free: 1-888-852-8623

Web: www.elabscience.com

Tel: 1-832-243-6086

Email: techsupport@elabscience.com

Fax: 1-832-243-6017