

Recombinant Human IL15RA&IL15 Fusion Protein (Fc Tag)



Catalog Number:PKSH032567

Note: Centrifuge before opening to ensure complete recovery of vial contents.

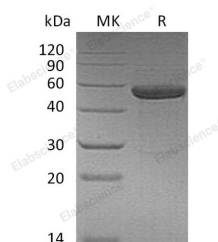
Description

Synonyms	IL15RA&IL15;Interleukin-15;IL-15;IL15;IL-15 receptor subunit alpha;IL-15RA;IL-15R-alpha;interleukin-15 receptor subunit alpha
Species	Human
Expression Host	HEK293 Cells
Sequence	Ile31-Asp96&Asn49-Ser162(Asn120Asp)
Accession	Q13261&P40933
Calculated Molecular Weight	46.9 kDa
Observed molecular weight	50-60 kDa
Tag	C-Fc
Bioactivity	Measured in a cell proliferation assay using CTLL-2 mouse cytotoxic T cells.The ED ₅₀ for this effect is 5-20 ng/ml.

Properties

Purity	> 95 % as determined by reducing SDS-PAGE.
Endotoxin	< 1.0 EU per µg of the protein as determined by the LAL method.
Storage	Generally, lyophilized proteins are stable for up to 12 months when stored at -20 to -80°C. Reconstituted protein solution can be stored at 4-8°C for 2-7 days. Aliquots of reconstituted samples are stable at < -20°C for 3 months.
Shipping	This product is provided as lyophilized powder which is shipped with ice packs.
Formulation	Lyophilized from a 0.2 µm filtered solution of 20mM PB, 8% Trehalose, 4% Mannitol, 0.02% Tween80 (w/v), pH 7.5. Normally 5 % - 8 % trehalose, mannitol and 0.01% Tween80 are added as protectants before lyophilization. Please refer to the specific b
Reconstitution	Please refer to the printed manual for detailed information.

Data



> 95 % as determined by reducing SDS-PAGE.

Background

IL15RA is a high-affinity receptor for interleukin-15. IL15ra associates as a heterotrimer with the IL-2 receptor beta and gamma subunits to initiate signal transduction. It can signal both in cis and trans where IL15R from one subset of cells presents IL15 to neighboring IL2RG-expressing cells. IL15ra is expressed in special cells including a wide variety of T and B cells and non-lymphoid cells. IL-15 is a cytokine that regulates T cell and natural killer cell activation and proliferation.

For Research Use Only

A Reliable Research Partner in Life Science and Medicine

Toll-free: 1-888-852-8623

Web: www.elabscience.com

Tel: 1-832-243-6086

Email: techsupport@elabscience.com

Fax: 1-832-243-6017

Recombinant Human IL15RA&IL15 Fusion Protein (Fc Tag)



Catalog Number: PKSH032567

IL-15 binds to the alpha subunit of the IL-15RA with high affinity. IL-15 also binds to the beta and gamma chains of the IL-2 receptor, but not the alpha subunit of the IL2 receptor. IL-15 is structurally and functionally related to IL-2. Both cytokines share some subunits of receptors, allowing them to compete for and negatively regulate each other's activity. The number of CD8+ memory T cells is controlled by a balance between IL-15 and IL-2. Despite their many overlapping functional properties, IL-2 and IL-15 are, in fact, quite distinct players in the immune system. IL-15 is constitutively expressed by a wide variety of cell types and tissues, including monocytes, macrophages and DCs.

For Research Use Only

A Reliable Research Partner in Life Science and Medicine

Toll-free: 1-888-852-8623

Tel: 1-832-243-6086

Fax: 1-832-243-6017

Web: www.elabscience.com

Email: techsupport@elabscience.com