

**Note:** Centrifuge before opening to ensure complete recovery of vial contents.

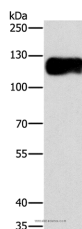
## Description

|                     |   |
|---------------------|---|
| <b>Reactivity</b>   | Human   |
| <b>Immunogen</b>    | Recombinant protein of human CAST                   |
| <b>Host</b>         | Rabbit  |
| <b>Isotype</b>      | IgG   |
| <b>Purification</b> | Affinity purification                               |
| <b>Conjugation</b>  | Unconjugated  |
| <b>Formulation</b>  | PBS with 0.05% sodium azide and 50% glycerol, PH7.4 |

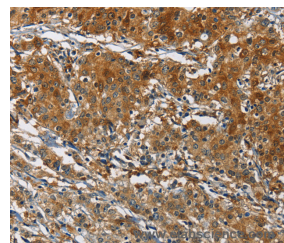
## Applications Recommended Dilution

|            |              |
|------------|--------------|
| <b>WB</b>  | 1:500-1:2000 |
| <b>IHC</b> | 1:100-1:300  |

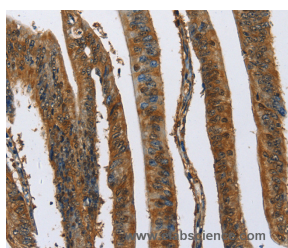
## Data



Western Blot analysis of Lovo cell using CAST Polyclonal Antibody at dilution of 1:750  
**Calculated Mw:77kDa**



Immunohistochemistry of paraffin-embedded Human gastric cancer using CAST Polyclonal Antibody at dilution of 1:70



Immunohistochemistry of paraffin-embedded Human colon cancer using CAST Polyclonal Antibody at dilution of 1:70

## Preparation & Storage

**Storage** Store at -20°C. Avoid freeze / thaw cycles.

## Background

The protein encoded by this gene is an endogenous calpain (calcium-dependent cysteine protease) inhibitor. It consists of an N-terminal domain L and four repetitive calpain-inhibition domains (domains 1-4), and it is involved in the proteolysis of amyloid precursor protein. The calpain/calpastatin system is involved in numerous membrane fusion events, such as neural vesicle exocytosis and platelet and red-cell aggregation. The encoded protein is also thought to affect the

## For Research Use Only

A Reliable Research Partner in Life Science and Medicine

Toll-free: 1-888-852-8623

Web: [www.elabscience.com](http://www.elabscience.com)

Tel: 1-832-243-6086

Email: [techsupport@elabscience.com](mailto:techsupport@elabscience.com)

Fax: 1-832-243-6017

# CAST Polyclonal Antibody

Catalog Number: E-AB-11022



expression levels of genes encoding structural or regulatory proteins. Alternatively spliced transcript variants encoding different isoforms have been described.

---

## For Research Use Only

A Reliable Research Partner in Life Science and Medicine

Toll-free: 1-888-852-8623

Tel: 1-832-243-6086

Fax: 1-832-243-6017

Web: [www.elabscience.com](http://www.elabscience.com)

Email: [techsupport@elabscience.com](mailto:techsupport@elabscience.com)