

Recombinant DPEP3 Monoclonal Antibody

catalog number: **AN300753L**

Note: Centrifuge before opening to ensure complete recovery of vial contents.

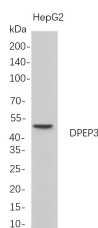
Description

Reactivity	Human
Immunogen	Recombinant Human DPEP3 protein
Host	Rabbit
Isotype	IgG, κ
Clone	B692
Purification	Protein A
Buffer	PBS, 50% glycerol, 0.05% Proclin 300, 0.05% protein protectant.

Applications Recommended Dilution

WB	1:1000-5000
IHC	1:100-300
IP	1:50-100

Data



Western Blot with Recombinant DPEP3 Monoclonal Antibody at dilution of 1:1000 dilution. Lane A: HepG2 whole cell lysate.

Observed-MW:54 kDa

Preparation & Storage

Storage	Store at -20°C Valid for 12 months. Avoid freeze / thaw cycles.
Shipping	Ice bag

Background

This gene encodes a membrane-bound glycoprotein from the family of dipeptidases involved in hydrolytic metabolism of various dipeptides, including penem and carbapenem beta-lactam antibiotics. This gene is located on chromosome 16 in a cluster with another member of this family. Alternatively spliced transcript variants that encode different isoforms have been found for this gene.

For Research Use Only