

Recombinant ASF1B Monoclonal Antibody

catalog number: **AN300452P**

Note: Centrifuge before opening to ensure complete recovery of vial contents.

Description

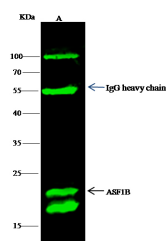
Reactivity	Human
Immunogen	Recombinant Human ASF1B Protein
Host	Rabbit
Isotype	IgG
Clone	6B1
Purification	Protein A
Buffer	0.2 µm filtered solution in PBS

Applications

Recommended Dilution

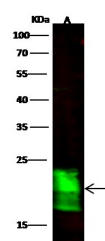
WB	1:500-1:2000
IP	0.5-2 µL/mg of lysate

Data



Immunoprecipitation analysis using 0.5 µL anti-ASF1B Monoclonal Antibody and 60 µg of Immunomagnetic beads Protein G. Western blot was performed from the immunoprecipitate using ASF1B Monoclonal Antibody at a dilution of 1:500. Lane A: 0.5 mg K562 Whole Cell Lysate

Observed-MW:22 kDa
Calculated-MW:22 kDa



Western Blot with ASF1B Monoclonal Antibody at dilution of 1:500 dilution. Lane A: K562 Whole Cell Lysate, Lysates/proteins at 30 µg per lane.

Observed-MW:22 kDa
Calculated-MW:22 kDa

Preparation & Storage

Storage	This antibody can be stored at 2°C-8°C for one month without detectable loss of activity. Antibody products are stable for twelve months from date of receipt when stored at -20°C to -80°C. Preservative-Free. Avoid repeated freeze-thaw cycles.
Shipping	Ice bag

Background

This gene encodes a member of the H3/H4 family of histone chaperone proteins and is similar to the anti-silencing function-1 gene in yeast. The encoded protein is the substrate of the tousel-like kinase family of cell cycle-regulated kinases, and may play a key role in modulating the nucleosome structure of chromatin by ensuring a constant supply of histones at sites of nucleosome assembly.

For Research Use Only

Toll-free: 1-888-852-8623
Web: www.elabscience.com

Tel: 1-832-243-6086
Email: techsupport@elabscience.com

Fax: 1-832-243-6017

Rev. V1.0