

Recombinant Human PIBF protein (His tag)

Catalog Number:PDEH100144



Note: Centrifuge before opening to ensure complete recovery of vial contents.

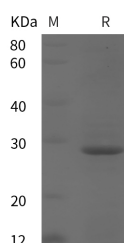
Description

Synonyms	C13orf24;KIAA1008;PIBF 1;PIBF;PIBF1;PIBF1;Progesterone immunomodulatory binding factor 1;Progesterone induced blocking factor 1
Species	Human
Expression Host	E.coli
Sequence	Asn 13-Val 203
Accession	Q8WXW3
Calculated Molecular Weight	20.9 kDa
Observed molecular weight	28 kDa
Tag	N-His

Properties

Purity	> 95 % as determined by reducing SDS-PAGE.
Endotoxin	Please contact us for more information.
Storage	Generally, lyophilized proteins are stable for up to 12 months when stored at -20 to -80°C. Reconstituted protein solution can be stored at 4-8°C for 2-7 days. Aliquots of reconstituted samples are stable at < -20°C for 3 months.
Shipping	This product is provided as lyophilized powder which is shipped with ice packs.
Formulation	Lyophilized from sterile PBS, pH 7.4. Normally 5 % - 8 % trehalose, mannitol and 0.01 % Tween80 are added as protectants before lyophilization. Please refer to the specific buffer information in the printed manual.
Reconstitution	Please refer to the printed manual for detailed information.

Data



> 95 % as determined by reducing SDS-PAGE.

Background

PIBF-1 (Progesterone induced blocking factor 1) is a 90-92 kDa progesterone-inducible molecule initially isolated from the lymphocytes of pregnant women. It is produced by lymphocytes plus villous trophoblast cells, and modulates the activity of cytotoxic NK cells. Human PIBF-1 is 757 amino acids (aa) in length. It contains a possible signal sequence (aa 1-26), two Leu-zippers (aa 311-323 and 643-664), two NLSs (aa 282-285 and 567-573), a bZIP sequence (aa 574-614), and an ER retention motif (aa 752-757). PIBF-1 is found in the nucleus, cytoplasm, and circulation, the result of multiple splice variants. SDS-page shows 90 kDa, 80-83 kDa, 48-52 kDa, 34-35 kDa, and 10-12 kDa isoforms. The 90 kDa form is nuclear and full-length, while the 34-35 kDa form is secreted and likely represents aa 1-223 spliced to aa 683-757.

For Research Use Only

A Reliable Research Partner in Life Science and Medicine

Toll-free: 1-888-852-8623

Web: www.elabscience.com

Tel: 1-832-243-6086

Email: techsupport@elabscience.com

Fax: 1-832-243-6017

Recombinant Human PIBF protein (His tag)

Catalog Number:PDEH100144



There is a 50-55 kDa form that is apparently intracellular, possibly bioactive and likely represents the N-terminus of the molecule. Over aa 19?419, human PIBF-1 shares 88% aa identity with mouse PIBF-1.

For Research Use Only

A Reliable Research Partner in Life Science and Medicine

Toll-free: 1-888-852-8623

Web: www.elabscience.com

Tel: 1-832-243-6086

Email: techsupport@elabscience.com

Fax: 1-832-243-6017