

CD169 Polyclonal Antibody

Catalog Number:E-AB-70160



Note: Centrifuge before opening to ensure complete recovery of vial contents.

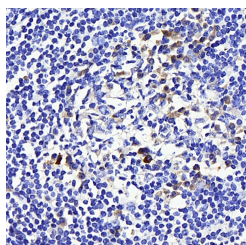
Description

| | |
|---------------------|--|
| Reactivity | Human,Rat |
| Immunogen | KLH conjugated Synthetic peptide corresponding to Mouse CD169 |
| Host | Rabbit |
| Isotype | IgG |
| Purification | Affinity purification |
| Conjugation | Unconjugated |
| Formulation | PBS with 0.02% sodium azide, 1% protective protein and 50% glycerol, pH7.4 |

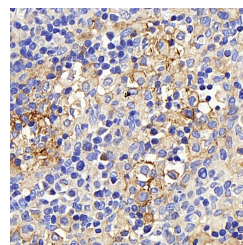
Applications Recommended Dilution

| | |
|------------|-------------|
| IHC | 1:200-1:800 |
|------------|-------------|

Data



Immunohistochemistry analysis of paraffin-embedded human tonsil using CD169 Polyclonal Antibody at dilution of 1:300.



Immunohistochemistry analysis of paraffin-embedded rat lymph node using CD169 Polyclonal Antibody at dilution of 1:300.

Preparation & Storage

Storage Store at -20°C. Avoid freeze / thaw cycles.

Background

This gene encodes a member of the immunoglobulin superfamily. The encoded protein is a lectin-like adhesion molecule that binds glycoconjugate ligands on cell surfaces in a sialic acid-dependent manner. It is a type I transmembrane protein expressed only by a subpopulation of macrophages and is involved in mediating cell-cell interactions. Alternative splicing produces a transcript variant encoding an isoform that is soluble rather than membrane-bound; however, the full-length nature of this variant has not been determined. SIGLEC1 (Sialic Acid Binding Ig Like Lectin 1) is a Protein Coding gene. Diseases associated with SIGLEC1 include Proliferative Glomerulonephritis and Diffuse Cutaneous Systemic Sclerosis. Among its related pathways are Immunoregulatory interactions between a Lymphoid and a non-Lymphoid cell and Innate Immune System. GO annotations related to this gene include carbohydrate binding. An important paralog of this gene is CD22.

For Research Use Only

A Reliable Research Partner in Life Science and Medicine

Toll-free: 1-888-852-8623

Web: www.elabscience.com

Tel: 1-832-243-6086

Email: techsupport@elabscience.com

Fax: 1-832-243-6017