

Recombinant Mouse PLA2G1B/PLA2 Protein (His Tag)

Catalog Number: PKSM041296



Note: Centrifuge before opening to ensure complete recovery of vial contents.

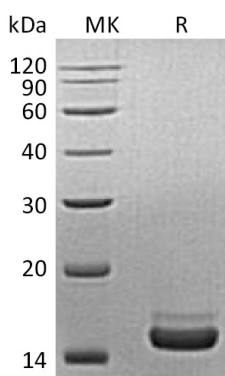
Description

Species	Mouse
Mol_Mass	15.6 kDa
Accession	Q9Z0Y2
Bio-activity	Not validated for activity

Properties

Purity	> 95 % as determined by reducing SDS-PAGE.
Endotoxin	< 1.0 EU per µg of the protein as determined by the LAL method.
Storage	Store at < -20°C, stable for 6 months. Please minimize freeze-thaw cycles.
Shipping	This product is provided as liquid. It is shipped at frozen temperature with blue ice/gel packs. Upon receipt, store it immediately at < - 20°C.
Formulation	Supplied as a 0.2 µm filtered solution of 20mM HEPES, 150mM NaCl, pH 7.0.
Reconstitution	Not Applicable

Data



Background

Mouse phospholipase A2 is a secreted protein which belongs to the phospholipase A2 family. Phospholipase A2/PLA2G1B catalyzes the release of fatty acids from glycerol-3-phosphocholines. The best known varieties are the digestive enzymes secreted as zymogens by the pancreas of mammals. PLA2G1B has been thought to play major role in digestion of glycerophospholipids in nutrients, given its abundance in digestive organs. Since its expression has been observed in non-digestive organs including the lung, spleen, kidney, ovary, retina, brain, and neurons, its function may not limited to digestive role. PLA2G1B are resistant to obesity and diabetes induced by feeding a diabetogenic high-fat/high-carbohydrate diet. PLA2G1B inhibition may be a potentially effective oral therapeutic option for treatment of obesity and diabetes.

For Research Use Only

A Reliable Research Partner in Life Science and Medicine
Tel:400-999-2100

Email:techsupport@elabscience.cn

Web:www.elabscience.cn

Rev. V3.2