

# Cytochrome b Polyclonal Antibody

catalog number: E-AB-16373

**Note:** Centrifuge before opening to ensure complete recovery of vial contents.

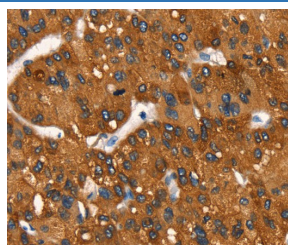
## Description

<b>Reactivity</b>	Human
<b>Immunogen</b>	Synthetic peptide of human MT-CYB
<b>Host</b>	Rabbit
<b>Isotype</b>	IgG
<b>Purification</b>	Affinity purification
<b>Conjugation</b>	Unconjugated
<b>buffer</b>	Phosphate buffered solution, pH 7.4, containing 0.05% stabilizer and 50% glycerol.

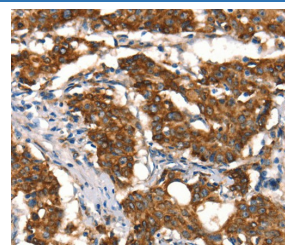
## Applications

Applications	Recommended Dilution
IHC	1:50-1:200

## Data



Immunohistochemistry of paraffin-embedded Human liver cancer tissue using Cytochrome b Polyclonal Antibody at dilution 1:50



Immunohistochemistry of paraffin-embedded Human gastric cancer tissue using Cytochrome b Polyclonal Antibody at dilution 1:50

## Preparation & Storage

<b>Storage</b>	Store at -20°C Valid for 12 months. Avoid freeze / thaw cycles.
<b>Shipping</b>	The product is shipped with ice pack, upon receipt, store it immediately at the temperature recommended.

## Background

Cytochrome b is a component of the ubiquinol-cytochrome c reductase complex, which is a respiratory chain that generates an electrochemical potential, coupled to ATP synthesis. The principal components of the b-c1 complex are cytochrome b, cytochrome c1, and the rieske protein. Cytochrome b possesses two heme groups, which are not covalently attached to the protein. Mutations in cytochrome b are associated with Leber's hereditary optic neuropathy and with myopathy.

## For Research Use Only