

P2RY2 Polyclonal Antibody

catalog number: E-AB-12607

Note: Centrifuge before opening to ensure complete recovery of vial contents.

Description

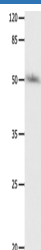
Reactivity	Human
Immunogen	Synthetic peptide of human P2RY2
Host	Rabbit
Isotype	IgG
Purification	Affinity purification
Conjugation	Unconjugated
buffer	Phosphate buffered solution, pH 7.4, containing 0.05% stabilizer and 50% glycerol.

Applications

Recommended Dilution

WB	1:200-1:1000
-----------	--------------

Data



Western Blot analysis of HT-29 cell using P2RY2 Polyclonal

Antibody at dilution of 1:500

Calculated-MV:42 kDa

Preparation & Storage

Storage	Store at -20°C Valid for 12 months. Avoid freeze / thaw cycles.
Shipping	The product is shipped with ice pack, upon receipt, store it immediately at the temperature recommended.

Background

The product of this gene belongs to the family of G-protein coupled receptors. This family has several receptor subtypes with different pharmacological selectivity, which overlaps in some cases, for various adenosine and uridine nucleotides. This receptor is responsive to both adenosine and uridine nucleotides. It may participate in control of the cell cycle of endometrial carcinoma cells. Three transcript variants encoding the same protein have been identified for this gene.

For Research Use Only