

## Recombinant C4.4A/LYPD3 Monoclonal Antibody

catalog number: **AN300244P**

**Note:** Centrifuge before opening to ensure complete recovery of vial contents.

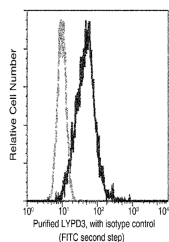
### Description

<b>Reactivity</b>	Human
<b>Immunogen</b>	Recombinant Human C4.4A / LYPD3 protein
<b>Host</b>	Rabbit
<b>Isotype</b>	IgG
<b>Clone</b>	5F7
<b>Purification</b>	Protein A
<b>Buffer</b>	0.2 µm filtered solution in PBS

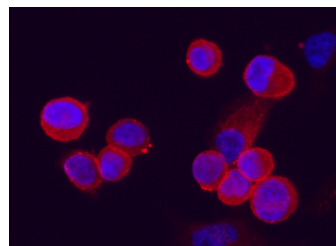
### Applications

Applications	Recommended Dilution
<b>WB</b>	1:500
<b>FCM</b>	1:25-1:100
<b>ICC/IF</b>	1:20-1:100

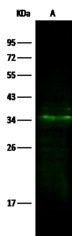
### Data



Flow cytometric analysis of Human LYPD3 expression on PC-3 cells. Cells were stained with purified anti-Human LYPD3, then a FITC-conjugated second step antibody. The fluorescence histograms were derived from gated events with the forward and side light-scatter characteristics of intact cells.



Immunofluorescence analysis of Human LYPD3 in PC3 cells. Cells were fixed with 4% PFA, blocked with 10% serum, and incubated with rabbit anti-Human LYPD3 Monoclonal Antibody (1:60) at 37°C 1 hour. Then cells were stained with the Alexa Fluor® 594-conjugated goat Anti-rabbit IgG secondary antibody (red) and counterstained with DAPI for nuclear staining (blue). Positive staining was localized to cells membrane.



Western Blot with C4.4A / LYPD3 Monoclonal Antibody at dilution of 1:500, Lane A: Hela Whole Cell Lysate, Lysates/proteins at 30 µg per lane.

**Observed-MW:36 kDa**

**Calculated-MW:36 kDa**

### Preparation & Storage

### For Research Use Only

**Storage**

This antibody can be stored at 2°C-8°C for one month without detectable loss of activity. Antibody products are stable for twelve months from date of receipt when stored at -20°C to -80°C. Preservative-Free. Avoid repeated freeze-thaw cycles.

**Shipping**

Ice bag

**Background**

Supports cell migration. May be involved in urothelial cell-matrix interactions. May be involved in tumor progression.