

## Recombinant Phospho-MEK1/2 (Ser217, 221) Monoclonal Antibody

catalog number: **AN300366L**

**Note:** Centrifuge before opening to ensure complete recovery of vial contents.

### Description

<b>Reactivity</b>	Human
<b>Immunogen</b>	A synthetic phosphopeptide corresponding to residues around Ser218 and Ser222 of the Human MEK1
<b>Host</b>	Rabbit
<b>Isotype</b>	IgG
<b>Clone</b>	11A4
<b>Purification</b>	Protein A
<b>Buffer</b>	10 mM sodium HEPES, 150 mM NaCl, 100 µg/mL protein protectant, 50% glycerol, pH 7.5

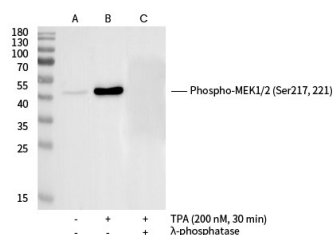
### Applications

### Recommended Dilution

**WB**

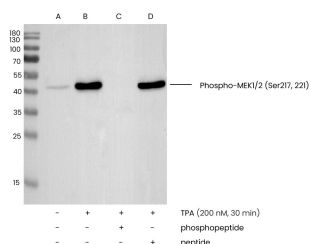
1:2000-1:20000

### Data



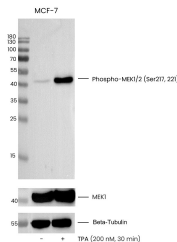
Western blot analysis of extracts from serum-starved Raji, untreated (line A); treated with TPA (200 nM, 30 min) (line B); treated with TPA and  $\lambda$ -phosphatase (line C) using Phospho-MEK1/2 (Ser217, 221) Antibody, Rabbit MAb at 1:1000 dilution.

**Observed-MW:43 kDa**  
**Calculated-MW:43 kDa**



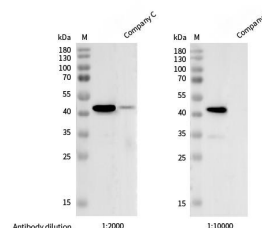
Western blot analysis of extracts from serum-starved Raji, untreated (line A); treated with TPA (200 nM, 30 min), without peptide (line B) or antigen-specific phosphopeptide (line C) or antigen-specific peptide (line D) using Phospho-MEK1/2 (Ser217, 221) Antibody, Rabbit MAb at 1:1000 dilution.

**Observed-MW:43 kDa**  
**Calculated-MW:43 kDa**



Western blot analysis of extracts from serum-starved Raji, untreated (-) or treated with TPA (200 nM, 30 min) (+), using Phospho-MEK1/2 (Ser217, 221) Antibody, Rabbit Mab at 1:1000 dilution. (upper) or Anti-MEK1 Antibody, Rabbit Polyclonal (middle) at 1:500 dilution. or Beta-Tubulin Loading Control Antibody, Mouse Mab at 1:20000 dilution.

**Observed-MW:43 kDa**  
**Calculated-MW:43 kDa**



Western blot analysis of extracts from serum-starved Raji, treated with TPA (200 nM, 30 min), using Phospho-MEK1/2 (Ser217, 221) Antibody, Rabbit Mab (Sino Biological) and other brands' antibodies (Company C) at dilution. of 1:2000, 1:10000.

**Observed-MW:43 kDa**  
**Calculated-MW:43 kDa**

### For Research Use Only

Toll-free: 1-888-852-8623  
Web: [www.elabscience.com](http://www.elabscience.com)

Tel: 1-832-243-6086  
Email: [techsupport@elabscience.com](mailto:techsupport@elabscience.com)

Fax: 1-832-243-6017

Rev. V1.0

## Preparation & Storage

**Storage**

This antibody can be stored at 2°C-8°C for one month without detectable loss of activity. Antibody products are stable for twelve months from date of receipt when stored at -20°C to -80°C. Preservative-Free. Avoid repeated freeze-thaw cycles.

**Shipping**

Ice bag

## Background

The protein encoded by this gene is a member of the dual specificity protein kinase family, which acts as a mitogen-activated protein (MAP) kinase kinase. MAP kinases, also known as extracellular signal-regulated kinases (ERKs), act as an integration point for multiple biochemical signals. This protein kinase lies upstream of MAP kinases and stimulates the enzymatic activity of MAP kinases upon wide variety of extra- and intracellular signals. As an essential component of MAP kinase signal transduction pathway, this kinase is involved in many cellular processes such as proliferation, differentiation, transcription regulation and development.

## For Research Use Only

Toll-free: 1-888-852-8623  
Web: [www.elabscience.com](http://www.elabscience.com)

Tel: 1-832-243-6086  
Email: [techsupport@elabscience.com](mailto:techsupport@elabscience.com)

Fax: 1-832-243-6017

Rev. V1.0