

Recombinant Sodium Potassium ATPase Monoclonal Antibody

catalog number: **AN300610L**

Note: Centrifuge before opening to ensure complete recovery of vial contents.

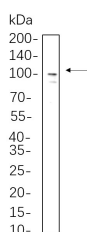
Description

Reactivity	Human;Mouse;Rat
Immunogen	Recombinant Human Sodium Potassium ATPase protein
Host	Rabbit
Isotype	IgG, κ
Clone	B545
Purification	Protein A
Buffer	PBS, 50% glycerol, 0.05% Proclin 300, 0.05% protein protectant.

Applications Recommended Dilution

IHC	1:2000-1:10000
WB	1:20000-1:50000
IF	1:200-1:1000
ELISA	1:5000-1:20000

Data



Western Blot with Recombinant Sodium Potassium ATPase

Monoclonal Antibody at dilution of 1:1000 dilution. Lane A:

A549 whole cell lysate.

Observed-MW:100 kDa

Calculated-MW:113 kDa

Preparation & Storage

Storage	Store at -20°C Valid for 12 months. Avoid freeze / thaw cycles.
Shipping	Ice bag

Background

ATPase Na⁺/K⁺ transporting subunit alpha 1(ATP1A1) Homo sapiens The protein encoded by this gene belongs to the family of P-type cation transport ATPases, and to the subfamily of Na⁺/K⁺ -ATPases. Na⁺/K⁺ -ATPase is an integral membrane protein responsible for establishing and maintaining the electrochemical gradients of Na and K ions across the plasma membrane. These gradients are essential for osmoregulation, for sodium-coupled transport of a variety of organic and inorganic molecules, and for electrical excitability of nerve and muscle. This enzyme is composed of two subunits, a large catalytic subunit (alpha) and a smaller glycoprotein subunit (beta). The catalytic subunit of Na⁺/K⁺ -ATPase is encoded by multiple genes. This gene encodes an alpha 1 subunit. Multiple transcript variants encoding different isoforms have been found for this gene.

For Research Use Only