

## Recombinant BMI1 Monoclonal Antibody

catalog number: AN300141P

**Note:** Centrifuge before opening to ensure complete recovery of vial contents.

### Description

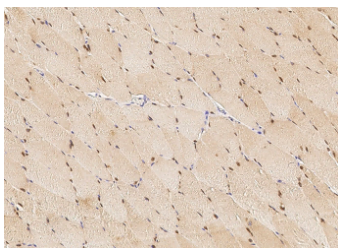
|                     |  |
|---------------------|--|
| <b>Reactivity</b>   | Human  |
| <b>Immunogen</b>    | A synthetic peptide corresponding to the center region of the Human BMI1 |
| <b>Host</b>         | Rabbit   |
| <b>Isotype</b>      | IgG  |
| <b>Clone</b>        | 4B3  |
| <b>Purification</b> | Protein A  |
| <b>Buffer</b>       | 0.2 µm filtered solution in PBS  |

### Applications

### Recommended Dilution

|       |             |
|-------|-------------|
| IHC-P | 1:100-1:500 |
|-------|-------------|

### Data



Immunohistochemistry of paraffin-embedded human skeletal muscle using BMI1 Monoclonal Antibody at dilution of 1:200.

### Preparation & Storage

|                 |  |
|-----------------|--|
| <b>Storage</b>  | This antibody can be stored at 2°C-8°C for one month without detectable loss of activity. Antibody products are stable for twelve months from date of receipt when stored at -20°C to -80°C. Preservative-Free. Avoid repeated freeze-thaw cycles. |
| <b>Shipping</b> | Ice bag  |

### Background

This gene encodes a ring finger protein that is major component of the polycomb group complex 1 (PRC1). This complex functions through chromatin remodeling as an essential epigenetic repressor of multiple regulatory genes involved in embryonic development and self-renewal in somatic stem cells. This protein also plays a central role in DNA damage repair. This gene is an oncogene and aberrant expression is associated with numerous cancers and is associated with resistance to certain chemotherapies. A pseudogene of this gene is found on chromosome X. Read-through transcription also exists between this gene and the upstream COMM domain containing 3 (COMMD3) gene.

### For Research Use Only