

## Recombinant FSH beta Monoclonal Antibody

catalog number: **AN301699L**

**Note:** Centrifuge before opening to ensure complete recovery of vial contents.

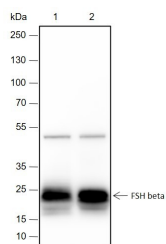
### Description

<b>Reactivity</b>	Human;Rat;Mouse
<b>Immunogen</b>	Recombinant human FSH beta fragment
<b>Host</b>	Rabbit
<b>Isotype</b>	IgG, $\kappa$
<b>Clone</b>	A407
<b>Purification</b>	Protein A purified
<b>Buffer</b>	PBS, 50% glycerol, 0.05% Proclin 300, 0.05% protein protectant.

### Applications Recommended Dilution

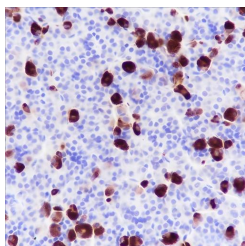
<b>WB</b>	1:500-1:2000
<b>IHC</b>	1:200-1:1000

### Data

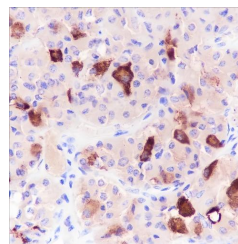


Western Blot with FSH beta Monoclonal Antibody at dilution of 1:2000. Lane 1: Mouse pituitary, Lane 2: Rat pituitary

**Observed-MW:23 kDa**  
**Calculated-MW:15 kDa**



Immunohistochemistry of paraffin-embedded Rat pituitary using FSH beta Monoclonal Antibody at dilution of 1:1000.



Immunohistochemistry of paraffin-embedded Human pituitary using FSH beta Monoclonal Antibody at dilution of 1:1000.

### Preparation & Storage

<b>Storage</b>	Store at -20°C Valid for 12 months. Avoid freeze / thaw cycles.
<b>Shipping</b>	Ice bag

### Background

Follitropin is involved in follicle development and spermatogenesis in reproductive organs. FSHB together with the alpha chain CGA constitutes follitropin, the follicle-stimulating hormone, and provides its biological specificity to the hormone heterodimer. FSHB binds FSHR, a G protein-coupled receptor, on target cells to activate downstream signaling pathways.

### For Research Use Only