

Recombinant Phospho-Smad2, 3 (Thr8) Monoclonal Antibody

catalog number: **AN300635L**

Note: Centrifuge before opening to ensure complete recovery of vial contents.

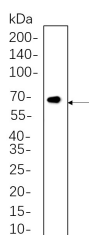
Description

Reactivity	Human;Mouse;Rat;Pig
Immunogen	A synthetic peptide corresponding to residues around (Thr8) of Human Phospho-Smad2, 3
Host	Rabbit
Isotype	IgG, κ
Clone	B570
Purification	Protein A
Buffer	PBS, 50% glycerol, 0.05% Proclin 300, 0.05% protein protectant.

Applications Recommended Dilution

WB	1:2000-1:10000
IF	1:200-1:1000
ELISA	1:5000-1:20000
IP	1:50-1:200

Data



Western Blot with Recombinant Phospho-Smad2, 3 (Thr8) Monoclonal Antibody at dilution of 1:1000 dilution. Lane A: NIH-3T3 whole cell lysate.

Observed-MW:62 kDa

Calculated-MW:48 kDa

Preparation & Storage

Storage	Store at -20°C Valid for 12 months. Avoid freeze / thaw cycles.
Shipping	Ice bag

Background

The protein encoded by this gene belongs to the SMAD, a family of proteins similar to the gene products of the Drosophila gene *mothers against decapentaplegic* (Mad) and the C. elegans gene Sma. SMAD proteins are signal transducers and transcriptional modulators that mediate multiple signaling pathways. This protein mediates the signal of the transforming growth factor (TGF)- β , and thus regulates multiple cellular processes, such as cell proliferation, apoptosis, and differentiation. This protein is recruited to the TGF- β receptors through its interaction with the SMAD anchor for receptor activation (SARA) protein. In response to TGF- β signal, this protein is phosphorylated by the TGF- β receptors. The phosphorylation induces the dissociation of this protein with SARA and the association with the family member SMAD4.

For Research Use Only