

## 14-3-3 beta/YWHAB Monoclonal Antibody

catalog number: **AN200031P**

**Note:** Centrifuge before opening to ensure complete recovery of vial contents.

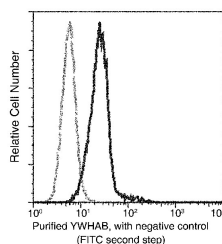
### Description

<b>Reactivity</b>	Human
<b>Immunogen</b>	Recombinant Human 14-3-3 beta / YWHAB protein
<b>Host</b>	Mouse
<b>Isotype</b>	IgG2b
<b>Clone</b>	A875
<b>Purification</b>	Protein A
<b>Buffer</b>	0.2 µm filtered solution in PBS

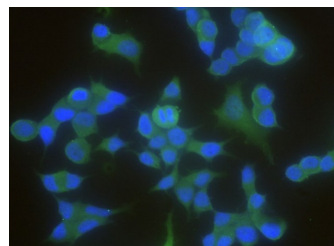
### Applications

Applications	Recommended Dilution
ICC/IF	1:20-1:100
FCM	1:25-1:100

### Data



Flow cytometric analysis of Human YWHAB expression on Molt-4 cells. The cells were stained with purified anti-Human YWHAB, then a FITC-conjugated second step antibody. The fluorescence histograms were derived from gated events with the forward and side light-scatter characteristics of intact cells.



Immunofluorescence analysis of Human YWHAB in MCF7 cells. Cells were fixed with 4% PFA, blocked with 10% serum, and incubated with Mouse anti-Human YWHAB Monoclonal Antibody (1:60) at 4°C overnight. Then cells were stained with the Alexa Fluor® 488-conjugated Goat Anti-mouse IgG secondary antibody (green) and counterstained with DAPI for nuclear staining (blue). Positive staining was localized to cytoplasm.

### Preparation & Storage

<b>Storage</b>	This antibody can be stored at 2°C-8°C for one month without detectable loss of activity. Antibody products are stable for twelve months from date of receipt when stored at -20°C to -80°C. Preservative-Free. Avoid repeated freeze-thaw cycles.
<b>Shipping</b>	Ice bag

### Background

This gene encodes a protein belonging to the 14-3-3 family of proteins, members of which mediate signal transduction by binding to phosphoserine-containing proteins. This highly conserved protein family is found in both plants and mammals. The encoded protein has been shown to interact with RAF1 and CDC22 phosphatases, suggesting that it may play a role in linking mitogenic signaling and the cell cycle machinery. Two transcript variants, which encode the same protein, have been identified for this gene.

### For Research Use Only