

Recombinant CLPS/Colipase Monoclonal Antibody

catalog number: **AN300271P**

Note: *Centrifuge before opening to ensure complete recovery of vial contents.*

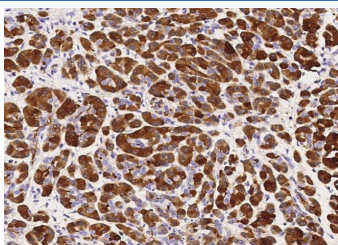
Description

Reactivity	Human
Immunogen	Recombinant Human CLPS / Colipase protein
Host	Rabbit
Isotype	IgG
Clone	B189
Purification	Protein A
Buffer	0.2 µm filtered solution in PBS

Applications Recommended Dilution

IHC-P	1:250-1:1000
--------------	--------------

Data



Immunohistochemistry of paraffin-embedded human pancreas using CLPS / Colipase Monoclonal Antibody at dilution of 1:500.

Preparation & Storage

Storage	This antibody can be stored at 2°C-8°C for one month without detectable loss of activity. Antibody products are stable for twelve months from date of receipt when stored at -20°C to -80°C. Preservative-Free. Avoid repeated freeze-thaw cycles.
Shipping	Ice bag

Background

The protein encoded by this gene is a cofactor needed by pancreatic lipase for efficient dietary lipid hydrolysis. It binds to the C-terminal, non-catalytic domain of lipase, thereby stabilizing an active conformation and considerably increasing the overall hydrophobic binding site. The gene product allows lipase to anchor noncovalently to the surface of lipid micelles, counteracting the destabilizing influence of intestinal bile salts. This cofactor is only expressed in pancreatic acinar cells, suggesting regulation of expression by tissue-specific elements. Three transcript variants encoding different isoforms have been found for this gene.

For Research Use Only