

Recombinant Dopamine beta Hydroxylase Monoclonal Antibody

catalog number: **AN301975L**

Note: *Centrifuge before opening to ensure complete recovery of vial contents.*

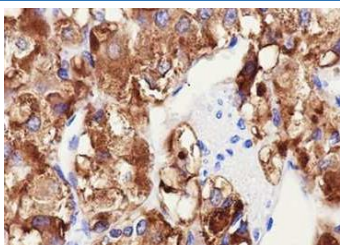
Description

Reactivity	Human;
Immunogen	Peptide. This information is proprietary to PTMab.
Host	Rabbit
Isotype	IgG, κ
Clone	A691
Purification	Protein A purified
Buffer	PBS, 50% glycerol, 0.05% Proclin 300, 0.05% protein protectant.

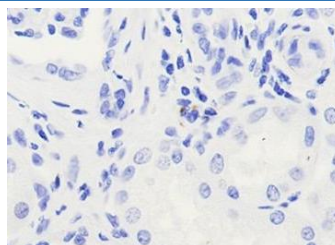
Applications Recommended Dilution

IHC	1:50-1:100
------------	------------

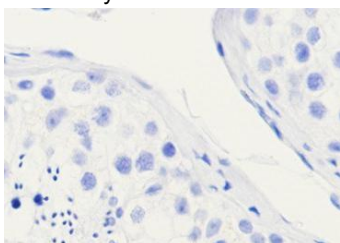
Data



Immunohistochemistry of paraffin-embedded Human adrenal gland using Dopamine beta Hydroxylase Monoclonal Antibody at dilution of 1:100.



Immunohistochemistry of paraffin-embedded Human kidney (negative tissue) using Dopamine beta Hydroxylase Monoclonal Antibody at dilution of 1:100.



Immunohistochemistry of paraffin-embedded Human testis (negative tissue) using Dopamine beta Hydroxylase Monoclonal Antibody at dilution of 1:100.

Preparation & Storage

Storage	Store at -20°C Valid for 12 months. Avoid freeze / thaw cycles.
Shipping	Ice bag

Background

Dopamine β -Hydroxylase (DBH) is an enzyme of the copper type II ascorbate-dependent mono-oxygenase family. This enzyme forms homotetramers composed of two noncovalently bound disulfide-linked dimers and is found as both membrane-associated and soluble forms. The soluble form is present in the lumen of secretory granules and is released from cells by exocytosis. DBH converts dopamine to noradrenaline. Deficiency in this enzyme causes a rare disease characterized by a complete absence of noradrenaline and adrenaline in plasma together with increased plasma dopamine levels. Orthostatic hypotension, the main symptom of DBH deficiency, can be alleviated by administration of dihydroxyphenylserine, a synthetic precursor of noradrenaline.

For Research Use Only