

Recombinant Human SELP Protein (His Tag)

Catalog Number: PDMH100407

Note: *Centrifuge before opening to ensure complete recovery of vial contents.*

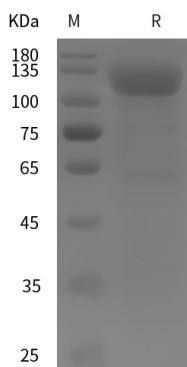
Description

Species	Human
Source	Mammalian-derived Human SELP protein Met1-Ala771, with an C-terminal His
Calculated MW	84.7 kDa
Observed MW	120 kDa
Accession	P16109
Bio-activity	Not validated for activity

Properties

Purity	> 95% as determined by reducing SDS-PAGE.
Endotoxin	< 1.0 EU/mg of the protein as determined by the LAL method
Storage	Generally, lyophilized proteins are stable for up to 12 months when stored at -20 to -80°C. Reconstituted protein solution can be stored at 4-8°C for 2-7 days. Aliquots of reconstituted samples are stable at < -20°C for 3 months.
Shipping	This product is provided as lyophilized powder which is shipped with ice packs.
Formulation	Lyophilized from a 0.2 µm filtered solution in PBS with 5% Trehalose and 5% Mannitol.
Reconstitution	It is recommended that sterile water be added to the vial to prepare a stock solution of 0.5 mg/mL. Concentration is measured by UV-Vis.

Data



SDS-PAGE analysis of Human SELP proteins, 2 µg/lane of Recombinant Human SELP proteins was resolved with SDS-PAGE under reducing conditions, showing bands at 120 kDa.

Background

P-selectin/CD62P is a single-pass type I membrane protein which is a member of the Selectin family. It consists 768 amino acid (aa). P-selectin is a cell surface glycoprotein expressed by activated platelets and endothelial cells. It induced expression in lung, liver, kidney and heart after endotoxin treatment. Ca²⁺-dependent receptor for myeloid cells that binds to carbohydrates on neutrophils and monocytes. It mediates the interaction of activated endothelial cells or platelets with leukocytes. The ligand recognized is sialyl-Lewis X. It also mediates rapid rolling of leukocyte rolling over vascular surfaces during the initial steps in inflammation through interaction with PSGL1. P-selectin interacts with SNX17, PSGL1/SEPL, PODXL2, mediates neutrophil adhesion and leukocyte rolling. This interaction requires the sialyl-Lewis X epitope of PSGL1 and PODXL2, and specific tyrosine sulfation on PSGL1.

For Research Use Only

Toll-free: 1-888-852-8623
Web: www.elabscience.com

Tel: 1-832-243-6086
Email: techsupport@elabscience.com

Fax: 1-832-243-6017