

## Recombinant Human FAM3D Protein (His Tag)

**Catalog Number:** PKSH032963

**Note:** Centrifuge before opening to ensure complete recovery of vial contents.

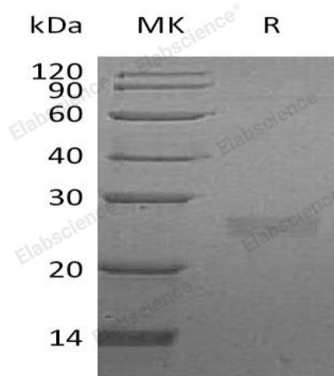
### Description

|                      |   |
|----------------------|---|
| <b>Species</b>       | Human   |
| <b>Source</b>        | HEK293 Cells-derived Human FAM3D protein Tyr26-Phe224, with an C-terminal His |
| <b>Calculated MW</b> | 23.1 kDa  |
| <b>Observed MW</b>   | 26 kDa  |
| <b>Accession</b>     | Q96BQ1  |
| <b>Bio-activity</b>  | Not validated for activity  |

### Properties

|                      |  |
|----------------------|--|
| <b>Purity</b>        | > 90 % as determined by reducing SDS-PAGE.   |
| <b>Concentration</b> | Subject to label value.  |
| <b>Endotoxin</b>     | < 1.0 EU per µg of the protein as determined by the LAL method.  |
| <b>Storage</b>       | Store at < -20°C, stable for 6 months. Please minimize freeze-thaw cycles.   |
| <b>Shipping</b>      | This product is provided as liquid. It is shipped at frozen temperature with blue ice/gel packs. Upon receipt, store it immediately at < - 20°C. |
| <b>Formulation</b>   | Supplied as a 0.2 µm filtered solution of 20mM PB, 150mM NaCl, pH 7.2.   |

### Data



> 90 % as determined by reducing SDS-PAGE.

### Background

Protein FAM3D is a novel cytokine-like protein that belongs to the FAM3 family. Human FAM3D is synthesized as a 224 amino acid precursor that contains a 25 amino acid signal sequence and a 199 amino acid mature chain. FAM3D is identified based on structural, but not sequence, homology to short chain cytokines including IL-2, IL-4 and GM-CSF. FAM3 proteins are four helix bundle cytokines with four conserved cysteines in all members (FAM3A-D). FAM3B is highly expressed in alpha and beta cells of the pancreas and is being investigated as a potential contributor to beta cell death and development of Type I Diabetes.

### For Research Use Only