

THOC1 Polyclonal Antibody

catalog number: E-AB-63014

Note: Centrifuge before opening to ensure complete recovery of vial contents.

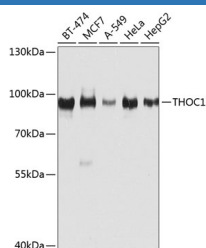
Description

Reactivity	Human;Mouse;Rat
Immunogen	Recombinant fusion protein of human THOC1 (NP_005122.2).
Host	Rabbit
Isotype	IgG
Purification	Affinity purification
Buffer	Phosphate buffered solution, pH 7.4, containing 0.05% stabilizer and 50% glycerol.

Applications

Applications	Recommended Dilution
WB	1:500-1:2000
IHC	1:50-1:100
IF	1:50-1:100

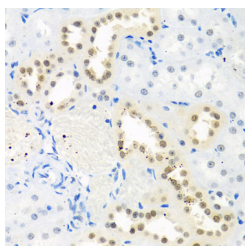
Data



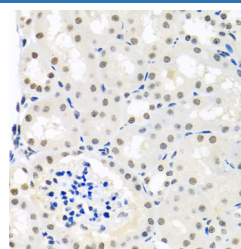
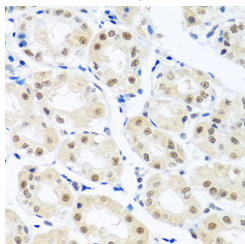
Western blot analysis of extracts of various cell lines using THOC1 Polyclonal Antibody at dilution of 1:1000.

Observed-MW:92 kDa

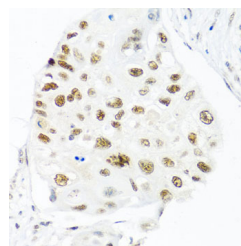
Calculated-MW:43 kDa/75 kDa



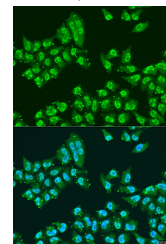
Immunohistochemistry of paraffin-embedded Rat kidney using THOC1 Polyclonal Antibody at dilution of 1:100 (40x lens).



Immunohistochemistry of paraffin-embedded Mouse kidney using THOC1 Polyclonal Antibody at dilution of 1:100 (40x lens).



Immunohistochemistry of paraffin-embedded Human lung cancer using THOC1 Polyclonal Antibody at dilution of 1:100 (40x lens).



For Research Use Only

Immunohistochemistry of paraffin-embedded Human stomach using THOC1 Polyclonal Antibody at dilution of 1:100 (40x lens).

Immunofluorescence analysis of U2OS cells using THOC1 Polyclonal Antibody at dilution of 1:100. Blue: DAPI for nuclear staining.

Preparation & Storage

Storage

Store at -20°C Valid for 12 months. Avoid freeze / thaw cycles.

Shipping

The product is shipped with ice pack, upon receipt, store it immediately at the temperature recommended.

Background

THOC1 (THO Complex 1) is a Protein Coding gene. Among its related pathways are Cleavage of Growing Transcript in the Termination Region and Transport of Mature Transcript to Cytoplasm. Gene Ontology (GO) annotations related to this gene include RNA binding.

For Research Use Only