

## SLC30A6 Polyclonal Antibody

**catalog number: E-AB-53093**

**Note:** Centrifuge before opening to ensure complete recovery of vial contents.

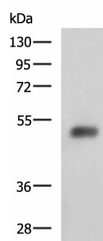
### Description

<b>Reactivity</b>	Human;Mouse
<b>Immunogen</b>	Fusion protein of human SLC30A6
<b>Host</b>	Rabbit
<b>Isotype</b>	IgG
<b>Purification</b>	Antigen affinity purification
<b>Buffer</b>	Phosphate buffered solution, pH 7.4, containing 0.05% stabilizer and 50% glycerol.

### Applications Recommended Dilution

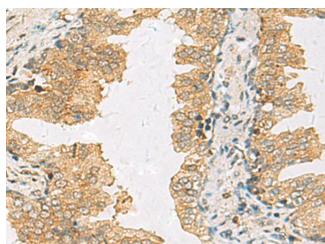
<b>WB</b>	1:1000-1:5000
<b>IHC</b>	1:50-1:200

### Data

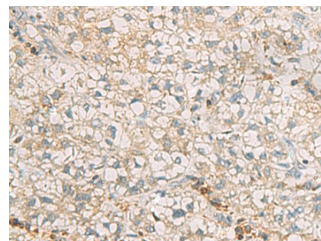


Western blot analysis of Human bladder transitional cell carcinoma grade 2-3 tissue lysate using SLC30A6 Polyclonal Antibody at dilution of 1:2000

**Observed-MW:Refer to figures**  
**Calculated-MW:51 kDa**



Immunohistochemistry of paraffin-embedded Human prostate cancer tissue using SLC30A6 Polyclonal Antibody at dilution of 1:70 (×200)



Immunohistochemistry of paraffin-embedded Human liver cancer tissue using SLC30A6 Polyclonal Antibody at dilution of 1:70 (×200)

### Preparation & Storage

<b>Storage</b>	Store at -20°C Valid for 12 months. Avoid freeze / thaw cycles.
<b>Shipping</b>	The product is shipped with ice pack, upon receipt, store it immediately at the temperature recommended.

### Background

### For Research Use Only

Zinc functions as a cofactor for numerous enzymes, nuclear factors, and hormones and as an intra- and intercellular signal ion. Members of the zinc transporter (ZNT)/SLC30 subfamily of the cation diffusion facilitator family, such as SLC30A6, permit cellular efflux of zinc.

## For Research Use Only

Toll-free: 1-888-852-8623  
Web: [www.elabscience.com](http://www.elabscience.com)

Tel: 1-832-243-6086  
Email: [techsupport@elabscience.com](mailto:techsupport@elabscience.com)

Fax: 1-832-243-6017

Rev. V1.7