

PBEF/NAMPT Polyclonal Antibody

catalog number: E-AB-40580

Note: Centrifuge before opening to ensure complete recovery of vial contents.

Description

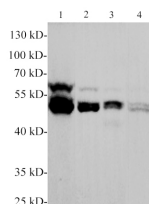
Reactivity	Human;Rat
Immunogen	Recombinant Human PBEF protein expressed by E.coli.
Host	Rabbit
Isotype	IgG
Purification	Antigen Affinity Purification
Conjugation	Unconjugated
Buffer	PBS with 0.05% proclin 300, 1% protective protein and 50% glycerol,pH7.4

Applications

Recommended Dilution

WB	1:500-1000
-----------	------------

Data



Western blotting with anti-PBEF polyclonal Antibody at dilution of 1:1000. Lane 1: Raji cell lysates, lane 2: PC-3 cell lysate, lane 3: MCF-7 cell lysate, lane 4: C6 cell lysate.

Observed-MW:52 kDa

Calculated-MW:55 kDa

Preparation & Storage

Storage	Store at -20°C Valid for 12 months. Avoid freeze / thaw cycles.
Shipping	The product is shipped with ice pack,upon receipt,store it immediately at the temperature recommended.

Background

PBEF (pre-B cell colony-enhancing factor), also known as visfatin and nicotinamide phosphoribosyltransferase, is an approximately 52 kDa member of the NAPRTase family of molecules. It functions both intracellularly and extracellularly, where it participates in NAD synthesis and insulin receptor activation, respectively.