

## PSMA Polyclonal Antibody

catalog number: D-AB-10276L

**Note:** Centrifuge before opening to ensure complete recovery of vial contents.

Description	
Reactivity	Human;Mouse;Rat
Immunogen	Recombinant Mouse PSMA Protein expressed by E.coli
Host	Rabbit
Isotype	IgG
Purification	Antigen Affinity Purification
Conjugation	Unconjugated
Buffer	PBS with 0.05% Proclin300, 1% protective protein and 50% glycerol, pH7.4

Applications	Recommended Dilution
WB	1:500-1:1000
IHC	1:100-1:300

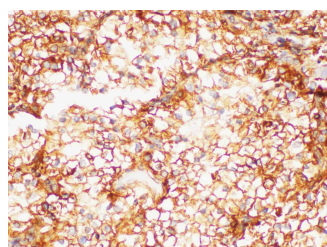
## Data



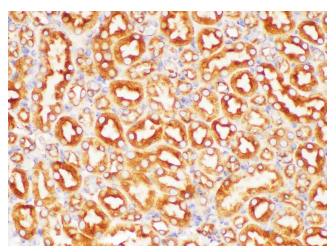
Western blot with PSMA Polyclonal Antibody at dilution of 1:1000.lane 1:LNCaP whole cell lysate

**Observed-MW:110 kDa**

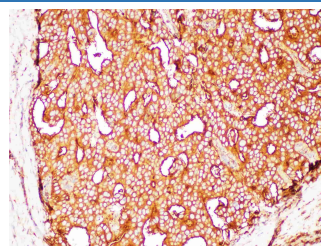
**Calculated-MW:86 kDa**



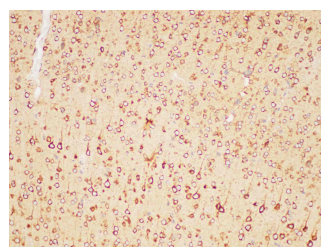
Immunohistochemistry of paraffin-embedded Human kidney cancer using PSMA Polyclonal Antibody at dilution of 1:200



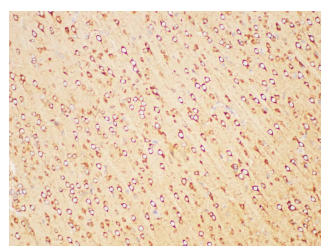
Immunohistochemistry of paraffin-embedded Mouse kidney using PSMA Polyclonal Antibody at dilution of 1:200



Immunohistochemistry of paraffin-embedded Human prostate cancer using PSMA Polyclonal Antibody at dilution of 1:200



Immunohistochemistry of paraffin-embedded Mouse brain using PSMA Polyclonal Antibody at dilution of 1:200



Immunohistochemistry of paraffin-embedded Rat brain using PSMA Polyclonal Antibody at dilution of 1:200

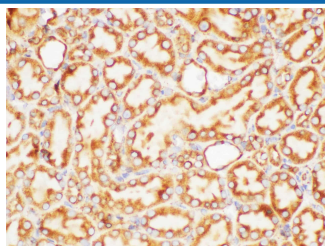
## For Research Use Only

Tel: 400-999-2100

Web: [www.elabscience.cn](http://www.elabscience.cn)

Email: [techsupport@elabscience.cn](mailto:techsupport@elabscience.cn)

Rev. V2.3



Immunohistochemistry of paraffin-embedded Rat kidney  
using PSMA Polyclonal Antibody at dilution of 1:200

## Preparation & Storage

### Storage

Store at -20°C Valid for 12 months. Avoid freeze / thaw cycles.

### Shipping

The product is shipped with ice pack, upon receipt, store it immediately at the temperature recommended.

## Background

Prostate-specific membrane antigen (PSMA) is expressed in normal and malignant prostatic epithelium and in a subset of non-prostatic tissues. In prostate cancer, PSMA expression has been shown to correlate with disease progression, with highest levels expressed in hormone-refractory and metastatic disease. The cellular localization of PSMA is cytoplasmic and/or membranous.