

Recombinant Mouse FOLR1 Protein (aa 1-231, His Tag)

Catalog Number: PKSM040605

Note: Centrifuge before opening to ensure complete recovery of vial contents.

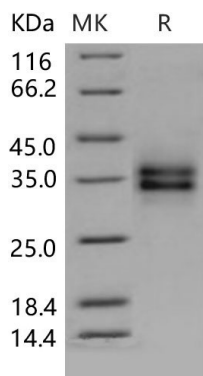
Description

Species	Mouse
Source	HEK293 Cells-derived Mouse FOLR1 protein Met 1-Met 231, with an C-terminal His
Calculated MW	25.6 kDa
Observed MW	33-37 kDa
Accession	NP_032060.2
Bio-activity	Not validated for activity

Properties

Purity	> 95 % as determined by reducing SDS-PAGE.
Endotoxin	< 1.0 EU per µg of the protein as determined by the LAL method.
Storage	Generally, lyophilized proteins are stable for up to 12 months when stored at -20 to -80 °C. Reconstituted protein solution can be stored at 4-8°C for 2-7 days. Aliquots of reconstituted samples are stable at < -20°C for 3 months.
Shipping	This product is provided as lyophilized powder which is shipped with ice packs.
Formulation	Lyophilized from sterile PBS, pH 7.4 Normally 5% - 8% trehalose, mannitol and 0.01% Tween 80 are added as protectants before lyophilization. Please refer to the specific buffer information in the printed manual.
Reconstitution	Please refer to the printed manual for detailed information.

Data



> 95 % as determined by reducing SDS-PAGE.

Background

For Research Use Only

The protein encoded by FOLR1 gene is a member of the folate receptor family. Members of this gene family bind folic acid and its reduced derivatives, and transport 5-methyltetrahydrofolate into cells. This gene product is a secreted protein that either anchors to membranes via a glycosyl-phosphatidylinositol linkage or exists in a soluble form. Mutations in this gene have been associated with neurodegeneration due to cerebral folate transport deficiency. Due to the presence of two promoters, multiple transcription start sites, and alternative splicing, multiple transcript variants encoding the same protein have been found for this gene.

Folate receptor α (FR α) is the most important subunit of Folate receptor and the alpha isoform has been shown to be selectively overexpressed in cancer types like breast and ovarian cancer compared to normal breast and ovarian epithelial cells. It was determined that Folate receptor α exhibits a limited expression on the apical surfaces of the epithelial cells of normal lung, breast, thyroid, parathyroid, and kidney tissues. For their uptake of folate, normal cells rely almost exclusively on the reduced folate carrier, whereas many carcinomas and myeloid leukemia cells overexpress a high-affinity FR on their surfaces, perhaps reflecting their increased need for folate to support rapid cell division