

Recombinant ILF3 Monoclonal Antibody

catalog number: **E-AB-81475**

Note: Centrifuge before opening to ensure complete recovery of vial contents.

Description

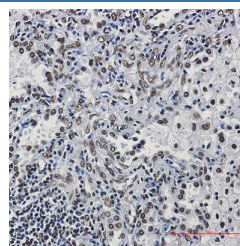
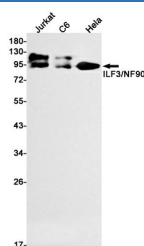
Reactivity	Human;Rat
Immunogen	A synthetic peptide of human ILF3
Host	Rabbit
Isotype	IgG
Clone	R04-3C1
Purification	Affinity Purified
Buffer	50mM Tris-Glycine(pH 7.4), 0.15M NaCl, 40% Glycerol, 0.05% stabilizer and 0.05% protective protein.

Applications

Recommended Dilution

WB	1:2000-1:5000
IHC	1:50-1:100
IF	1:50-1:100

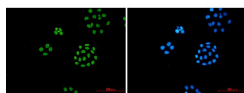
Data



Western blot detection of ILF3/NF90 in Jurkat,C6,HeLa cell lysates using ILF3/NF90 Rabbit mAb(1:1000 diluted).Predicted band size:95kDa.Observed band size:95kDa.

Immunohistochemistry of ILF3 in paraffin-embedded Human lung cancer tissue using ILF3 Rabbit mAb at dilution 1:50

Observed-MW:95 kDa
Calculated-MW:95 kDa



Immunofluorescence of ILF3 (green) in hela using ILF3 Rabbit mAb at dilution 1:50, and DAPI(blue)

Preparation & Storage

Storage	Store at -20°C Valid for 12 months. A void freeze / thaw cycles.
Shipping	The product is shipped with ice pack,upon receipt,store it immediately at the temperature recommended.

Background

For Research Use Only

This gene encodes a double-stranded RNA (dsRNA) binding protein that complexes with other proteins, dsRNAs, small noncoding RNAs, and mRNAs to regulate gene expression and stabilize mRNAs. This protein (NF90, ILF3) forms a heterodimer with a 45 kDa transcription factor (NF45, ILF2) required for T-cell expression of interleukin 2. This complex has been shown to affect the redistribution of nuclear mRNA to the cytoplasm. Knockdown of NF45 or NF90 protein retards cell growth, possibly by inhibition of mRNA stabilization. In contrast, an isoform (NF110) of this gene that is predominantly restricted to the nucleus has only minor effects on cell growth when its levels are reduced. Alternative splicing results in multiple transcript variants encoding distinct isoforms.

For Research Use Only

Toll-free: 1-888-852-8623
Web: www.elabscience.com

Tel: 1-832-243-6086
Email: techsupport@elabscience.com

Fax: 1-832-243-6017

Rev. V1.7