

## Recombinant Rat TDGF1 Protein (Fc Tag)

**Catalog Number:** PKSR030352

**Note:** Centrifuge before opening to ensure complete recovery of vial contents.

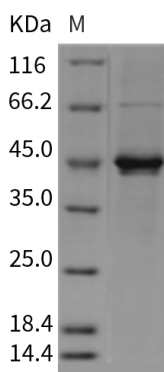
### Description

<b>Species</b>	Rat
<b>Source</b>	HEK293 Cells-derived Rat TDGF1 protein Met 1-Cys 143, with an C-terminal hFc
<b>Calculated MW</b>	41.0 kDa
<b>Observed MW</b>	45 kDa
<b>Accession</b>	XP_001056317.2
<b>Bio-activity</b>	Not validated for activity

### Properties

<b>Purity</b>	> 90 % as determined by reducing SDS-PAGE.
<b>Endotoxin</b>	< 1.0 EU per µg of the protein as determined by the LAL method.
<b>Storage</b>	Generally, lyophilized proteins are stable for up to 12 months when stored at -20 to -80°C. Reconstituted protein solution can be stored at 4-8°C for 2-7 days. Aliquots of reconstituted samples are stable at < -20°C for 3 months.
<b>Shipping</b>	This product is provided as lyophilized powder which is shipped with ice packs.
<b>Formulation</b>	Lyophilized from sterile PBS, pH 7.4 Normally 5% - 8% trehalose, mannitol and 0.01% Tween 80 are added as protectants before lyophilization. Please refer to the specific buffer information in the printed manual.
<b>Reconstitution</b>	Please refer to the printed manual for detailed information.

### Data



> 90 % as determined by reducing SDS-PAGE.

### Background

#### For Research Use Only

Cripto/TDGF1 is a member of the epidermal growth factor (EGF)- Cripto, Frl-1, and Cryptic (CFC) family. EGF-CFC family member proteins share a variant EGF-like motif, a conserved cysteine-rich domain, and a C-terminal hydrophobic region. Before gastrulation, Cripto is asymmetrically expressed in a proximal&ndash;distal gradient in the epiblast, and subsequently is expressed in the primitive streak and newly formed embryonic mesoderm. These proteins play key roles in intercellular signaling pathways during vertebrate embryogenesis. Mutations in Cripto/TDGF1 can cause autosomal visceral heterotaxy. Cripto/TDGF1 is involved in left-right asymmetric morphogenesis during organ development. Cripto signalling is essential for the conversion of a proximal&ndash;distal asymmetry into an orthogonal anterior&ndash;posterior axis. The mechanism of inhibitory effects of the Cripto includes both cancer cell apoptosis, activation of c-Jun-NH(2)-terminal kinase and p38 kinase signaling pathways and blocking of Akt phosphorylation. Thus, Cripto is a unique target, and Immunohistochemistry to Cripto could be of therapeutic value for human cancers.

## For Research Use Only

Toll-free: 1-888-852-8623  
Web: [www.elabscience.com](http://www.elabscience.com)

Tel: 1-832-243-6086  
Email: [techsupport@elabscience.com](mailto:techsupport@elabscience.com)

Fax: 1-832-243-6017