

## Recombinant Human LMAN2/VIP36 Protein (Human Cells, His Tag)

Catalog Number: PKSH033330

**Note:** Centrifuge before opening to ensure complete recovery of vial contents.

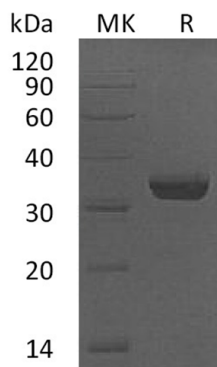
### Description

<b>Species</b>	Human
<b>Source</b>	HEK293 Cells-derived Human LMAN2/VIP36 protein Asp45-Arg322, with an C-terminal His
<b>Mol_Mass</b>	32.7 kDa
<b>Accession</b>	Q12907
<b>Bio-activity</b>	Not validated for activity

### Properties

<b>Purity</b>	> 95 % as determined by reducing SDS-PAGE.
<b>Endotoxin</b>	< 1.0 EU per µg of the protein as determined by the LAL method.
<b>Storage</b>	Generally, lyophilized proteins are stable for up to 12 months when stored at -20 to -80 °C. Reconstituted protein solution can be stored at 4-8°C for 2-7 days. Aliquots of reconstituted samples are stable at < -20°C for 3 months.
<b>Shipping</b>	This product is provided as lyophilized powder which is shipped with ice packs.
<b>Formulation</b>	Lyophilized from a 0.2 µm filtered solution of 50mM Tris-HCl, 10mM GSH, pH 8.0. Normally 5% - 8% trehalose, mannitol and 0.01% Tween 80 are added as protectants before lyophilization.
	Please refer to the specific buffer information in the printed manual.
<b>Reconstitution</b>	Please refer to the printed manual for detailed information.

### Data



> 95 % as determined by reducing SDS-PAGE.

### Background

Vesicular integral-membrane protein VIP36 is also known as Glycoprotein GP36b; Lectin mannose-binding 2; Vesicular integral-membrane protein 36; LMAN2 and C5orf8. LMAN2 is widely expressed and contains one L-type lectin-like domain. LMAN2 binds high mannose type glycoproteins and may facilitate their sorting; trafficking and quality control. LMAN2 plays a role as an intracellular lectin in the early secretory pathway. LMAN2 interacts with N-acetyl-D-galactosamine and high-mannose type glycans and may also bind to O-linked glycans. LMAN2 is also involved in the transport and sorting of glycoproteins carrying high mannose-type glycans.

### For Research Use Only