

Recombinant Phospho-CREB (Ser133) Monoclonal Antibody

catalog number: **AN300123L**

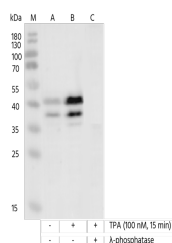
Note: Centrifuge before opening to ensure complete recovery of vial contents.

Description

Reactivity	Human
Immunogen	A synthetic phosphopeptide corresponding to residues around Ser133 of human CREB.
Host	Rabbit
Isotype	IgG
Clone	9D15
Purification	Protein A
Buffer	10 mM sodium HEPES, 150 mM NaCl, 100 µg/mL protein protectant, 50% glycerol, pH 7.5

Applications Recommended Dilution

WB	1:10000-1:200000
IHC-P	1:100-1:500



Western blot analysis of extracts from serum-starved HeLa, untreated (line A); treated with TPA (100 nM, 15 min) (line B); treated with TPA and λ -phosphatase (line C) using Phospho-CREB (Ser133) Monoclonal Antibody at 1:200000 dilution.

Observed-MW:38 kDa, 40 kDa

Calculated-MW:35 kDa

Preparation & Storage

Storage	This antibody can be stored at 2°C-8°C for one month without detectable loss of activity. Antibody products are stable for twelve months from date of receipt when stored at -20°C to -80°C. Preservative-Free. Avoid repeated freeze-thaw cycles.
Shipping	Ice bag

Background

This gene encodes a transcription factor that is a member of the leucine zipper family of DNA binding proteins. This protein binds as a homodimer to the cAMP-responsive element, an octameric palindrome. The protein is phosphorylated by several protein kinases, and induces transcription of genes in response to hormonal stimulation of the cAMP pathway. Alternate splicing of this gene results in several transcript variants encoding different isoforms.

For Research Use Only