

## Recombinant Rat EphA3 Protein (Fc Tag)

**Catalog Number: PKSR030159**

**Note:** *Centrifuge before opening to ensure complete recovery of vial contents.*

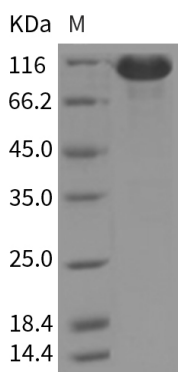
### Description

<b>Species</b>	Rat
<b>Source</b>	HEK293 Cells-derived Rat EphA3 protein Met1-His541, with an C-terminal hFc
<b>Calculated MW</b>	85.8 kDa
<b>Observed MW</b>	103 kDa
<b>Accession</b>	EDL75897.1
<b>Bio-activity</b>	Immobilized ratEFNA5-His at 10 µg/ml (100 µl/well) can bind rat EPHA3-Fc, The EC <sub>50</sub> of rat EPHA3-Fc is 12.1-28.4 ng/ml.

### Properties

<b>Purity</b>	> 95 % as determined by reducing SDS-PAGE.
<b>Endotoxin</b>	< 1.0 EU per µg of the protein as determined by the LAL method.
<b>Storage</b>	Generally, lyophilized proteins are stable for up to 12 months when stored at -20 to -80°C. Reconstituted protein solution can be stored at 4-8°C for 2-7 days. Aliquots of reconstituted samples are stable at < -20°C for 3 months.
<b>Shipping</b>	This product is provided as lyophilized powder which is shipped with ice packs.
<b>Formulation</b>	Lyophilized from sterile PBS, pH 7.4 Normally 5% - 8% trehalose, mannitol and 0.01% Tween 80 are added as protectants before lyophilization. Please refer to the specific buffer information in the printed manual.
<b>Reconstitution</b>	Please refer to the printed manual for detailed information.

### Data



> 95 % as determined by reducing SDS-PAGE.

### Background

EPHA3 gene belongs to the ephrin receptor subfamily of the protein-tyrosine kinase family. EPH and EPH-related receptors have been implicated in mediating developmental events, particularly in the nervous system. The ephrin receptors are divided into 2 groups based on the similarity of their extracellular domain sequences and their affinities for binding ephrin-A and ephrin-B ligands. EPHA3 gene encodes a protein that binds ephrin-A ligands. EPHA3 is involved in the retinotectal mapping of neurons. It may also control the segregation but not the guidance of motor and sensory axons during neuromuscular circuit development.

### For Research Use Only