

Lamin B1 Monoclonal Antibody

catalog number: AN005330L

Note: Centrifuge before opening to ensure complete recovery of vial contents.

Description

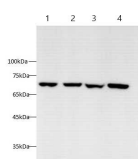
Reactivity	Human
Immunogen	Recombinant human Lamin B1 protein by E.coli
Host	Mouse
Isotype	IgG2b
Clone	7H10
Purification	Protein A/G Purification
Conjugation	Unconjugated
Buffer	PBS with 0.05% Proclin300, 1% protective protein and 50% glycerol, pH7.4

Applications

Recommended Dilution

WB	1:2000-1:4000
IF	1:500-1:1000

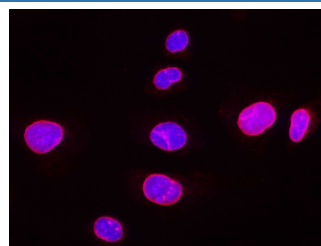
Data



Western blot with Anti Lamin B1 Monoclonal Antibody at dilution of 1:5000. Lane 1: HL-60 cell lysate, Lane 2: HeLa cell lysate, Lane 3: Hep G2 cell lysate, Lane 4: THP-1 cell lysate.

Observed-MW:70 kDa

Calculated-MW:66 kDa



Immunofluorescence analysis of U-2 OS cells using Lamin B1 Monoclonal Antibody at dilution of 1:500.

Preparation & Storage

Storage	Store at -20°C Valid for 12 months. Avoid freeze / thaw cycles.
Shipping	The product is shipped with ice pack, upon receipt, store it immediately at the temperature recommended.

Background

Lamins are components of the nuclear lamina, a fibrous layer on the nucleoplasmic side of the inner nuclear membrane, which is thought to provide a framework for the nuclear envelope and may also interact with chromatin.