

Recombinant Mouse CXADR/CAR Protein (Fc Tag)

Catalog Number: PKSM041345

Note: Centrifuge before opening to ensure complete recovery of vial contents.

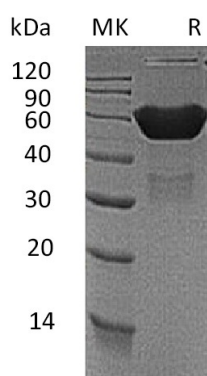
Description

Species	Mouse
Source	HEK293 Cells-derived Mouse CXADR/CAR protein Leu20-Gly237, with an C-terminal Fc
Calculated MW	51.0 kDa
Observed MW	50-70 kDa
Accession	P97792
Bio-activity	Not validated for activity

Properties

Purity	> 95 % as determined by reducing SDS-PAGE.
Endotoxin	< 1.0 EU per µg of the protein as determined by the LAL method.
Storage	Generally, lyophilized proteins are stable for up to 12 months when stored at -20 to -80 °C. Reconstituted protein solution can be stored at 4-8°C for 2-7 days. Aliquots of reconstituted samples are stable at < -20°C for 3 months.
Shipping	This product is provided as lyophilized powder which is shipped with ice packs.
Formulation	Lyophilized from a 0.2 µm filtered solution of PBS, pH 7.4. Normally 5% - 8% trehalose, mannitol and 0.01% Tween 80 are added as protectants before lyophilization.
Reconstitution	Please refer to the specific buffer information in the printed manual. Please refer to the printed manual for detailed information.

Data



Background

For Research Use Only

Toll-free: 1-888-852-8623
Web: www.elabscience.com

Tel: 1-832-243-6086
Email: techsupport@elabscience.com

Fax: 1-832-243-6017

Rev. V3.6

Coxsackievirus and adenovirus receptor homolog (CAR), also known as CXADR, is a type I transmembrane glycoprotein that belongs to the CTX family of the Ig superfamily. CXADR has monomer subunit that interacts with LNX, BAIAP1, DLG4, PRKCABP, TJP1 and CTNNB1. It also interacts with MPDZ and JAML. CXADR composed of of the epithelial apical junction complex that may function as a homophilic cell adhesion molecule and is essential for tight junction integrity. CXADR also involved in transepithelial migration of leukocytes through adhesive interactions with JAML a transmembrane protein of the plasma membrane of leukocytes. The interaction between both receptors also mediates the activation of gamma-delta T-cells, a subpopulation of T-cells residing in epithelia and involved in tissue homeostasis and repair. Upon epithelial CXADR-binding, JAML induces downstream cell signaling events in gamma-delta T-cells through PI3-kinase and MAP kinases. It results in proliferation and production of cytokines and growth factors by T-cells that in turn stimulate epithelial tissues repair.