

UBE2N Polyclonal Antibody

catalog number: E-AB-53571

Note: Centrifuge before opening to ensure complete recovery of vial contents.

Description

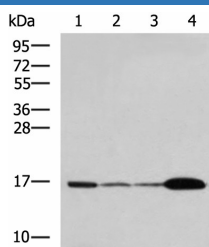
Reactivity	Human;Mouse;Rat
Immunogen	Synthetic peptide of human UBE2N
Host	Rabbit
Isotype	IgG
Purification	Antigen affinity purification
Conjugation	Unconjugated
Buffer	Phosphate buffered solution, pH 7.4, containing 0.05% stabilizer and 50% glycerol.

Applications

Recommended Dilution

WB	1:500-1:2000
IHC	1:50-1:200

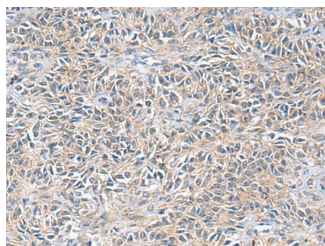
Data



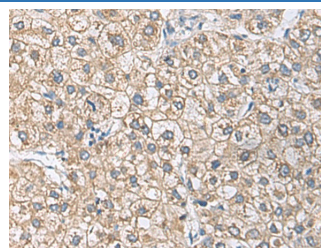
Western blot analysis of Mouse brain tissue Hela cell
LNCAP cell HepG2 cell Jurkat cell lysates using UBE2N
Polyclonal Antibody at dilution of 1:800

Observed-MW:Refer to figures

Calculated-MW:17 kDa



Immunohistochemistry of paraffin-embedded Human ovarian
cancer tissue using UBE2N Polyclonal Antibody at dilution
of 1:55(×200)



Immunohistochemistry of paraffin-embedded Human liver
cancer tissue using UBE2N Polyclonal Antibody at dilution
of 1:55(×200)

Preparation & Storage

Storage	Store at -20°C Valid for 12 months. Avoid freeze / thaw cycles.
Shipping	The product is shipped with ice pack,upon receipt,store it immediately at the temperature recommended.

Background

For Research Use Only

The modification of proteins with ubiquitin is an important cellular mechanism for targeting abnormal or short-lived proteins for degradation. Ubiquitination involves at least three classes of enzymes: ubiquitin-activating enzymes, or E1s, ubiquitin-conjugating enzymes, or E2s, and ubiquitin-protein ligases, or E3s. This gene encodes a member of the E2 ubiquitin-conjugating enzyme family. Studies in mouse suggest that this protein plays a role in DNA postreplication repair.