

Recombinant NCAM1/CD56 Monoclonal Antibody

catalog number: **AN300292P**

Note: Centrifuge before opening to ensure complete recovery of vial contents.

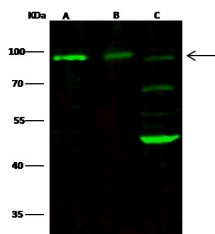
Description

Reactivity	Human
Immunogen	A synthetic peptide corresponding to the center region of the Human NCAM1/CD56
Host	Rabbit
Isotype	IgG
Clone	2B13
Purification	Protein A
Buffer	0.2 µm filtered solution in PBS

Applications Recommended Dilution

WB	1:500-1:1000
-----------	--------------

Data



Western Blot with NCAM1 Monoclonal Antibody at dilution of 1:500 dilution. Lane A: Jurkat Whole Cell Lysate, Lane B: SH-SY5Y Whole Cell Lysate, Lane C: Mouse brain Tissue Lysate, Lysates/proteins at 30 µg per lane.

Observed-MW:93 kDa

Calculated-MW:93 kDa

Preparation & Storage

Storage	This antibody can be stored at 2°C-8°C for one month without detectable loss of activity. Antibody products are stable for twelve months from date of receipt when stored at -20°C to -80°C. Preservative-Free. Avoid repeated freeze-thaw cycles.
Shipping	Ice bag

Background

This gene encodes a cell adhesion protein which is a member of the immunoglobulin superfamily. The encoded protein is involved in cell-to-cell interactions as well as cell-matrix interactions during development and differentiation. The encoded protein has been shown to be involved in development of the nervous system, and for cells involved in the expansion of T cells and dendritic cells which play an important role in immune surveillance. Alternative splicing results in multiple transcript variants.

For Research Use Only