

## Recombinant Human SIRP gamma/CD172g Protein (Fc Tag)

**Catalog Number:** PKSH033353

**Note:** Centrifuge before opening to ensure complete recovery of vial contents.

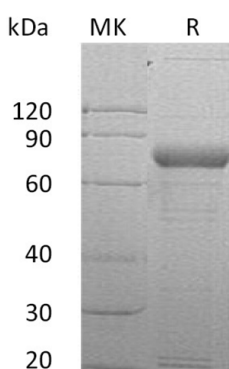
### Description

<b>Species</b>	Human
<b>Source</b>	HEK293 Cells-derived Human SIRP gamma/CD172g protein Glu29-Pro360, with an C-terminal Fc
<b>Calculated MW</b>	63.9 kDa
<b>Observed MW</b>	80 kDa
<b>Accession</b>	Q9P1W8
<b>Bio-activity</b>	Not validated for activity

### Properties

<b>Purity</b>	> 90 % as determined by reducing SDS-PAGE.
<b>Endotoxin</b>	< 1.0 EU per µg of the protein as determined by the LAL method.
<b>Storage</b>	Generally, lyophilized proteins are stable for up to 12 months when stored at -20 to -80 °C. Reconstituted protein solution can be stored at 4-8°C for 2-7 days. Aliquots of reconstituted samples are stable at < -20°C for 3 months.
<b>Shipping</b>	This product is provided as lyophilized powder which is shipped with ice packs.
<b>Formulation</b>	Lyophilized from a 0.2 µm filtered solution of PBS, pH 7.4. Normally 5% - 8% trehalose, mannitol and 0.01% Tween 80 are added as protectants before lyophilization.
<b>Reconstitution</b>	Please refer to the specific buffer information in the printed manual. Please refer to the printed manual for detailed information.

### Data



> 90 % as determined by reducing SDS-PAGE.

### Background

Signal-Regulatory Protein Gamma (SIRPG) is a member of the signal-regulatory protein (SIRP) family and also belongs to the immunoglobulin superfamily. SIRPG is detected in the liver, and at very low levels in the brain, heart, lung, pancreas, kidney, placenta, and skeletal muscle. SIRPG is an immunoglobulin-like cell surface receptor. On binding with CD47, SIRPG mediates cell-cell adhesion. Engagement on T-cells by CD47 on antigen-presenting cells results in enhanced antigen-specific T-cell proliferation and costimulates T-cell activation. SIRPG as receptor-type transmembrane glycoproteins is involved in the negative regulation of receptor tyrosine kinase-coupled signaling processes.

### For Research Use Only

Toll-free: 1-888-852-8623  
Web: [www.elabscience.com](http://www.elabscience.com)

Tel: 1-832-243-6086  
Email: [techsupport@elabscience.com](mailto:techsupport@elabscience.com)

Fax: 1-832-243-6017