

CREB5 Polyclonal Antibody

catalog number: **E-AB-90915**

Note: Centrifuge before opening to ensure complete recovery of vial contents.

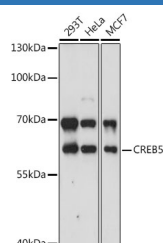
Description

Reactivity	Human; Rat
Immunogen	Recombinant fusion protein of human CREB5
Host	Rabbit
Isotype	IgG
Purification	Affinity purification
Buffer	Phosphate buffered solution, pH 7.4, containing 0.05% stabilizer and 50% glycerol.

Applications

WB	1:500-1:2000
-----------	--------------

Data



Western blot analysis of extracts of various cell lines using
CREB5 Polyclonal Antibody at 1:3000 dilution.

Observed-MW:57 kDa

Calculated-MW:41 kDa/53 kDa/56 kDa

Preparation & Storage

Storage	Store at -20°C Valid for 12 months. Avoid freeze / thaw cycles.
Shipping	The product is shipped with ice pack, upon receipt, store it immediately at the temperature recommended.

Background

The product of this gene belongs to the CRE (cAMP response element)-binding protein family. Members of this family contain zinc-finger and bZIP DNA-binding domains. The encoded protein specifically binds to CRE as a homodimer or a heterodimer with c-Jun or CRE-BP1, and functions as a CRE-dependent trans-activator. Alternatively spliced transcript variants encoding different isoforms have been identified.

For Research Use Only