

## DESI2 Polyclonal Antibody

catalog number: **E-AB-90347**

**Note:** Centrifuge before opening to ensure complete recovery of vial contents.

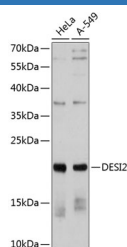
### Description

<b>Reactivity</b>	Human
<b>Immunogen</b>	Recombinant fusion protein of human DESI2
<b>Host</b>	Rabbit
<b>Isotype</b>	IgG
<b>Purification</b>	Affinity purification
<b>Buffer</b>	Phosphate buffered solution, pH 7.4, containing 0.05% stabilizer and 50% glycerol.

### Applications

<b>WB</b>	1:500-1:2000
-----------	--------------

### Data



Western blot analysis of extracts of various cell lines using  
DESI2 Polyclonal Antibody at 1:1000 dilution.

**Observed-MV:21 kDa**

**Calculated-MV:17 kDa/21 kDa**

### Preparation & Storage

<b>Storage</b>	Store at -20°C Valid for 12 months. Avoid freeze / thaw cycles.
<b>Shipping</b>	The product is shipped with ice pack, upon receipt, store it immediately at the temperature recommended.

### Background

Has deubiquitinating activity towards 'Lys-48'- and 'Lys-63'-linked polyubiquitin chains. Deubiquitinates 'Lys-48'-linked polyubiquitination of RPS7 leading to its stabilization.

### For Research Use Only