

POF1B Polyclonal Antibody

catalog number: **E-AB-91907**

Note: Centrifuge before opening to ensure complete recovery of vial contents.

Description

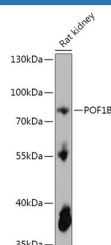
Reactivity	Human;Rat
Immunogen	Recombinant fusion protein of human POF1B
Host	Rabbit
Isotype	IgG
Purification	Affinity purification
Buffer	Phosphate buffered solution, pH 7.4, containing 0.05% stabilizer and 50% glycerol.

Applications

Recommended Dilution

WB	1:500-1:2000
-----------	--------------

Data



Western blot analysis of extracts of Rat kidney using POF1B Polyclonal Antibody at 1:1000 dilution.

Observed-MW:85 kDa

Preparation & Storage

Storage	Store at -20°C Valid for 12 months. Avoid freeze / thaw cycles.
Shipping	The product is shipped with ice pack, upon receipt, store it immediately at the temperature recommended.

Background

Premature ovarian failure (POF) is characterized by primary or secondary amenorrhea in women less than 40 years old. Two POF susceptibility regions called "POF1" and "POF2" have been identified by breakpoint mapping of X-autosome translocations. POF1 extends from Xq21-qter while POF2 extends from Xq13.3 to Xq21.1. This gene, POF1B, resides in the POF2 region. This gene is expressed at trace levels in mouse prenatal ovary and is barely detectable or absent from adult ovary, in human and in the mouse respectively. This gene's expression is restricted to epithelia with its highest expression in the epidermis, and oro-pharyngeal and gastro-intestinal tracts. The protein encoded by this gene binds non-muscle actin filaments. The role this gene may play in the etiology of premature ovarian failure remains to be determined. [provided by RefSeq, Jan 2010]

For Research Use Only