

SULT1E1 Polyclonal Antibody

catalog number: E-AB-14380

Note: Centrifuge before opening to ensure complete recovery of vial contents.

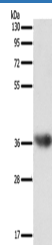
Description

Reactivity	Human
Immunogen	Recombinant protein of human SULT1E1
Host	Rabbit
Isotype	IgG
Purification	Affinity purification
Buffer	Phosphate buffered solution, pH 7.4, containing 0.05% stabilizer and 50% glycerol.

Applications

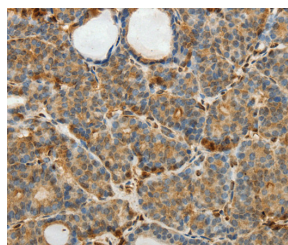
Applications	Recommended Dilution
WB	1:200-1:1000
IHC	1:50-1:200

Data



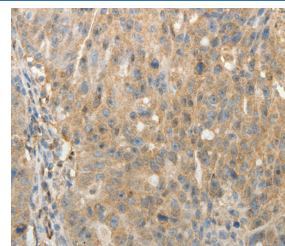
Western Blot analysis of Human liver cancer tissue using SULT1E1 Polyclonal Antibody at dilution of 1:500

Calculated-MV:35 kDa



Immunohistochemistry of paraffin-embedded Human thyroid cancer using SULT1E1 Polyclonal Antibody at dilution of

1:30



Immunohistochemistry of paraffin-embedded Human ovarian cancer using SULT1E1 Polyclonal Antibody at dilution of

1:30

Preparation & Storage

Storage	Store at -20°C Valid for 12 months. Avoid freeze / thaw cycles.
Shipping	The product is shipped with ice pack, upon receipt, store it immediately at the temperature recommended.

Background

Sulfotransferase enzymes catalyze the sulfate conjugation of many hormones, neurotransmitters, drugs, and xenobiotic compounds. These cytosolic enzymes are different in their tissue distributions and substrate specificities. The gene structure (number and length of exons) is similar among family members. This gene encodes a protein that transfers a sulfo moiety to and from estrone, which may control levels of estrogen receptors.

For Research Use Only