

CYCS Monoclonal Antibody

catalog number: E-AB-22110

Note: Centrifuge before opening to ensure complete recovery of vial contents.

Description

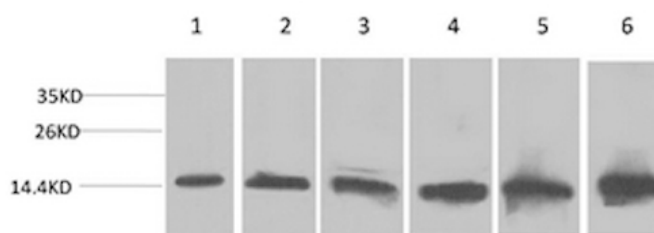
Reactivity	Human;Mouse;Rat
Immunogen	Recombinant Protein
Host	Mouse
Isotype	IgG
Clone	8G3
Purification	Protein A purification
Conjugation	Unconjugated
Buffer	Phosphate buffered solution, pH 7.4, containing 0.05% stabilizer, 0.5% protein protectant and 50% glycerol.

Applications

Recommended Dilution

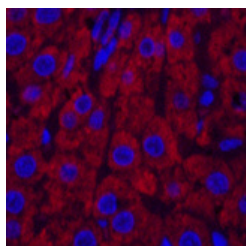
WB	1:500-1:2000
IHC	1:100-1:300
IF	1:100-1:300

Data

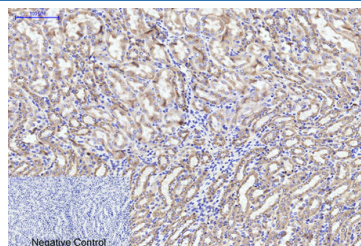


Western Blot analysis of 1) HeLa, 2) 293T, 3) 3T3, 4) Mouse liver, 5) Rat liver, 6) Rat kidney with CYCS Monoclonal Antibody.

Observed-MW:14 kDa



Immunofluorescence analysis of Rat liver tissue using CYCS Monoclonal Antibody at dilution of 1:200.



Immunohistochemistry of paraffin-embedded Mouse kidney tissue using CYCS Monoclonal Antibody at dilution of 1:200.

Preparation & Storage

Storage	Store at -20°C Valid for 12 months. Avoid freeze / thaw cycles.
Shipping	The product is shipped with ice pack, upon receipt, store it immediately at the temperature recommended.

Background

For Research Use Only

This gene encodes a small heme protein that functions as a central component of the electron transport chain in mitochondria. The encoded protein associates with the inner membrane of the mitochondrion where it accepts electrons from cytochrome b and transfers them to the cytochrome oxidase complex. This protein is also involved in initiation of apoptosis. Mutations in this gene are associated with autosomal dominant nonsyndromic thrombocytopenia. Numerous processed pseudogenes of this gene are found throughout the human genome.