

## Cyclin E1 Polyclonal Antibody

catalog number: **E-AB-31074**

**Note:** Centrifuge before opening to ensure complete recovery of vial contents.

### Description

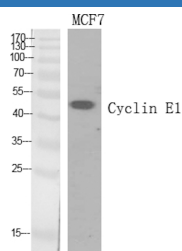
<b>Reactivity</b>	Human;Mouse;Rat
<b>Immunogen</b>	Synthesized peptide derived from the Internal region of human Cyclin E1
<b>Host</b>	Rabbit
<b>Isotype</b>	IgG
<b>Purification</b>	Affinity purification
<b>Buffer</b>	Phosphate buffered solution, pH 7.4, containing 0.05% stabilizer, 0.5% protein protectant and 50% glycerol.

### Applications

### Recommended Dilution

<b>WB</b>	1:500-1:2000
<b>IHC</b>	1:100-1:300
<b>IF</b>	1:200-1:1000

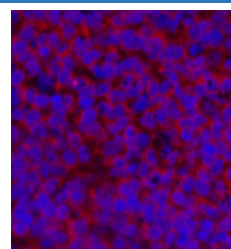
### Data



Western Blot analysis of MCF7 cells using Cyclin E1 Polyclonal Antibody at dilution of 1:500.

**Observed-MW:49 kDa**

**Calculated-MW:47 kDa**



Immunofluorescence analysis of Rat spleen tissue using Cyclin E1 Polyclonal Antibody at dilution of 1:200.

### Preparation & Storage

<b>Storage</b>	Store at -20°C Valid for 12 months. Avoid freeze / thaw cycles.
<b>Shipping</b>	The product is shipped with ice pack, upon receipt, store it immediately at the temperature recommended.

### Background

Essential for the control of the cell cycle at the G1/S (start) transition.

### For Research Use Only